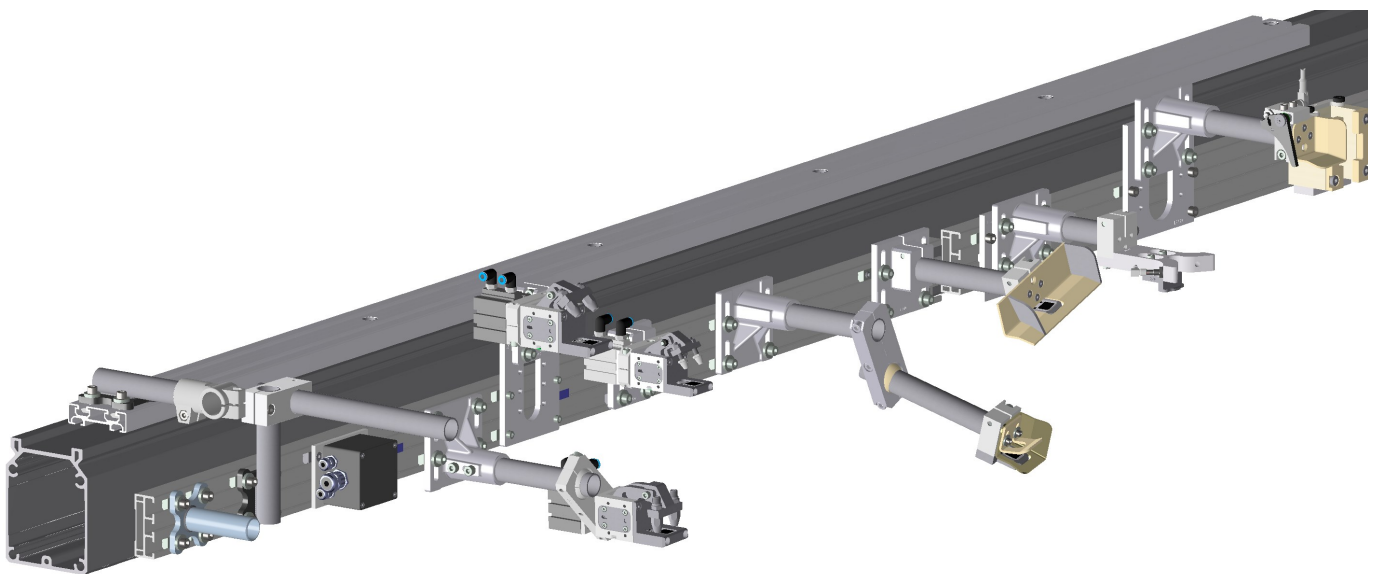


# Gillet

## GmbH



## Modular tooling System



## Greifer System Komponenten / Modular Tooling System

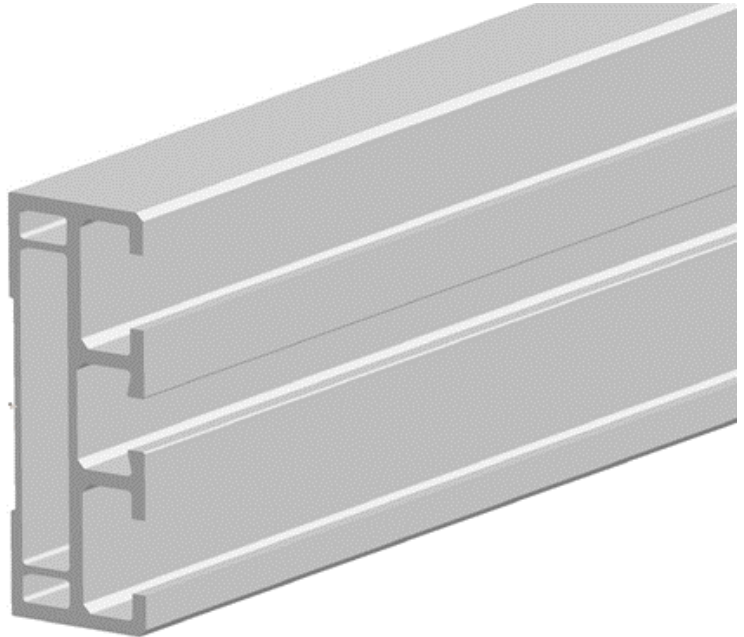
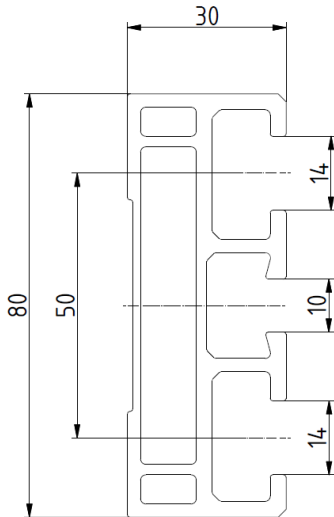
### Inhaltsverzeichnis

◇	<b>Anwendungen</b> Applications	2	Seite / pag.
◇	<b>Hilfsschienenprofile</b> Auxiliary bar profiles	3	Seite / pag.
◇	<b>Schlossplatten</b> Lock Plate	4	Seite / pag.
◇	<b>Hilfsschienenprofile mit Schlossplatten</b> Auxiliary bar profiles with lock plates	8	Seite / pag.
◇	<b>Nutensteine für Profilgröße 80x30</b> T-Slot thread profile size 80x30	10	Seite / pag.
◇	<b>Greiferhalter</b> Supports	12	Seite / pag.
◇	<b>Verlagerungsplatten</b> Shift plates	16	Seite / pag.
◇	<b>Rohre</b> Tubes	17	Seite / pag.
◇	<b>Kreuz-Klemmverbinder</b> Two way connector	22	Seite / pag.
◇	<b>Parallelverbinder</b> Parallel connector	25	Seite / pag.
◇	<b>Verbinder mit 1 Kugel</b> Connector with 1 ball	26	Seite / pag.
◇	<b>Verbinder mit 2 Kugeln</b> Connector with 2 balls	28	Seite / pag.
◇	<b>Adapter DESTACO / Springer</b> Adapter DESTACO / Springer	29	Seite / pag.
◇	<b>Teilekontrolle</b> Parts controll	34	Seite / pag.
◇	<b>Normschaufeln</b> Basic shovel	37	Seite / pag.
◇	<b>Zubehör, Köcherkupplung, Doppelbelchkontrolle</b> Equipment	40	Seite / pag.

## Greifer System Komponenten / Modular Tooling System

### Hilfsschienenprofil 80x30

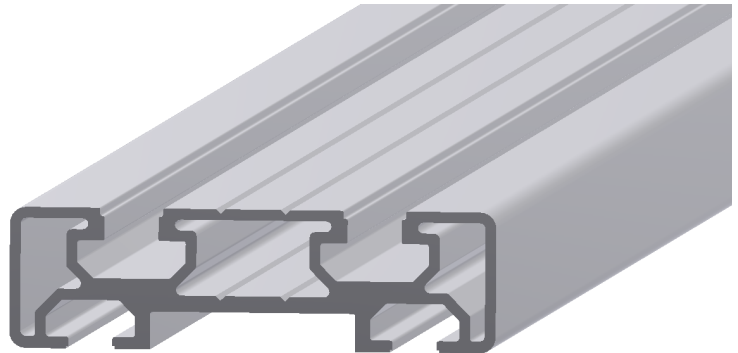
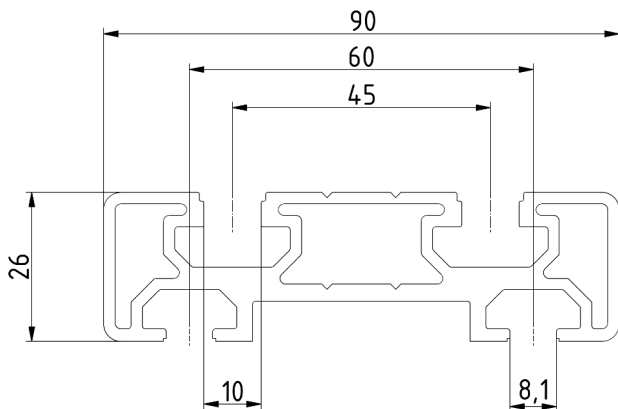
Auxiliary bar profile



Profilgröße Profile size	Artikelnummer order number	Gewicht / Weight	Werkstoff/ Material	$I_x/I_y - \text{cm}^4/\text{cm}^4$	Oberfläche Treatment	Geometrienorm	Lagerlänge Stock length
80x30	800015170	1,95 kg/m	AlMgSi05 F25, EN AW 6063	52,15 / 6,48	Eloxiert / anodized E6/EV1	EN 12020-2	5200 mm 6100 mm

### Hilfsschienenprofil 90x26

Auxiliary bar profile

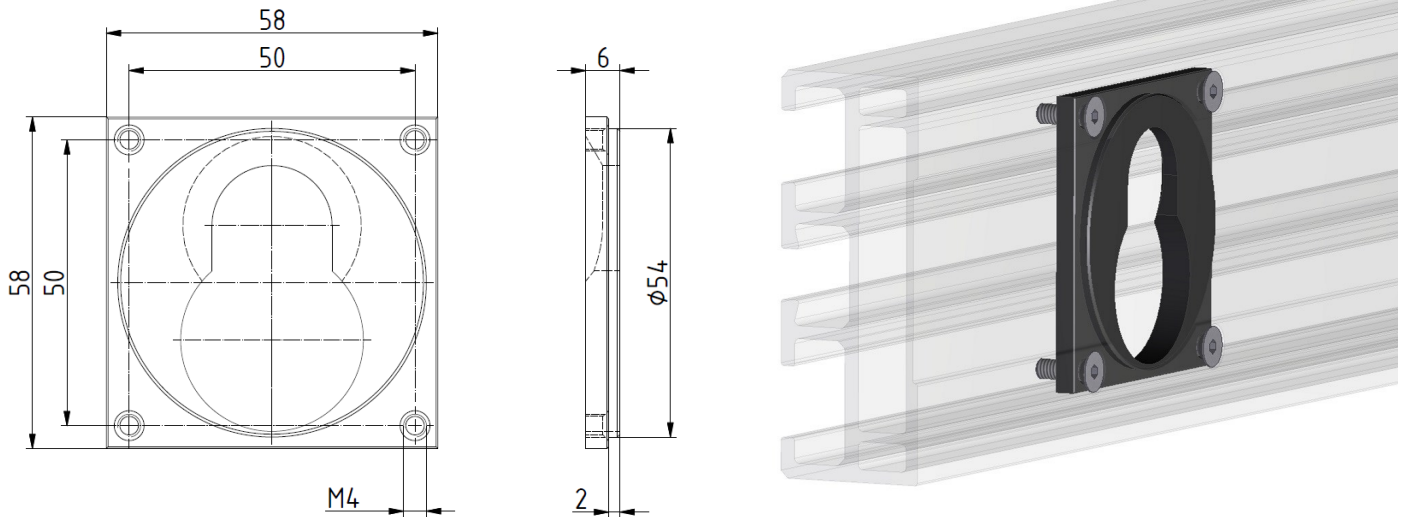


Profilgröße Profile size	Artikelnummer order number	Gewicht / Weight	Werkstoff/ Material	$I_x/I_y - \text{cm}^4/\text{cm}^4$	Oberfläche Treatment	Geometrienorm	Lagerlänge Stock length
90x26	800031890	2,12 kg/m	AlMgSi05 F25, EN AW 6063	52,15 / 6,48	Eloxiert / anodized E6/EV1	EN 12020-2	6100 mm

## Greifer System Komponenten / Modular Tooling System

### Schlossplatte

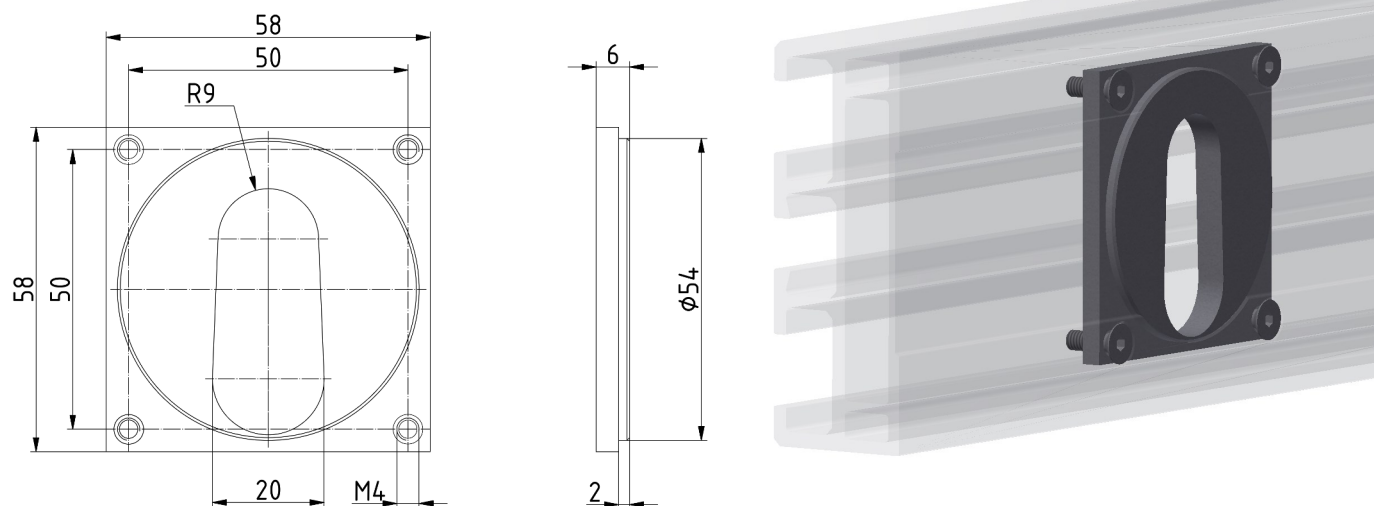
Lock plate



Profilgröße Profile size	Artikelnummer order number	Gewicht Weight	Werkstoff Material	Oberfläche Treatment
80x30	800015190	86 g	C45	Brüniert / burnished

### Schlossplatte

Lock plate

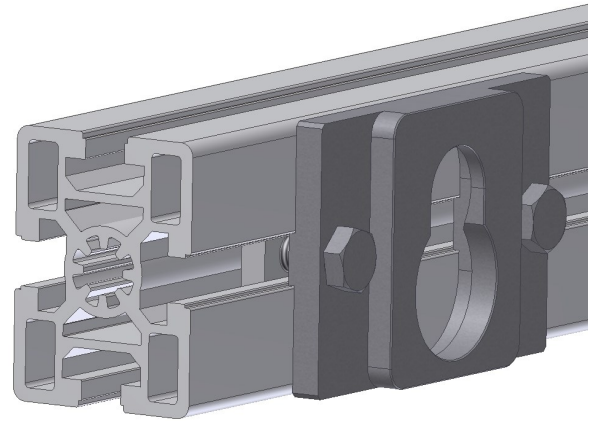
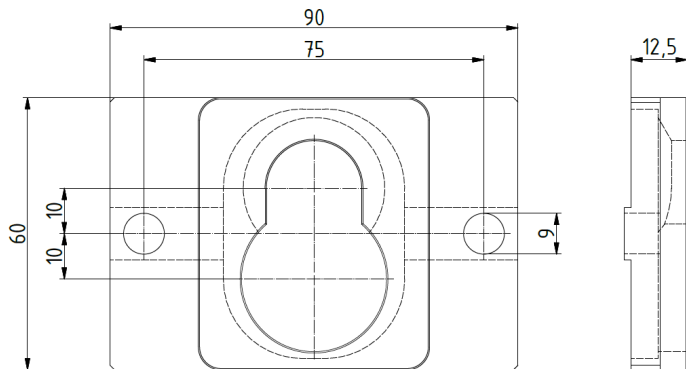


Profilgröße Profile size	Artikelnummer/order number	Gewicht / Weight	Werkstoff / Material	Oberfläche/Treatment
80x30	800021489	104 g	C45	Brüniert / burnished

## Greifer System Komponenten / Modular Tooling System

### Schlossplatte für MSI 45x60S Profil

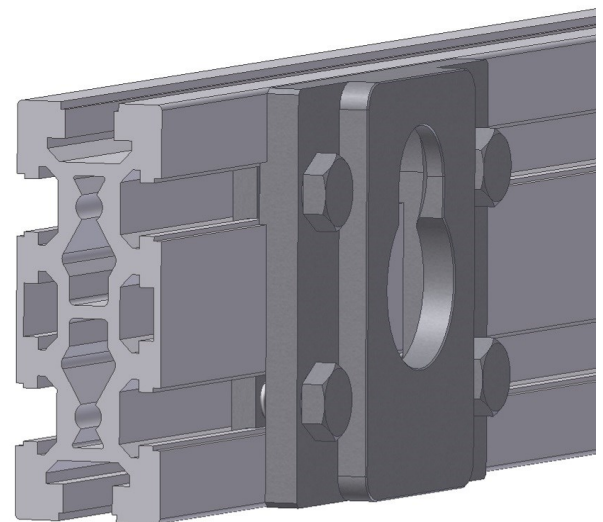
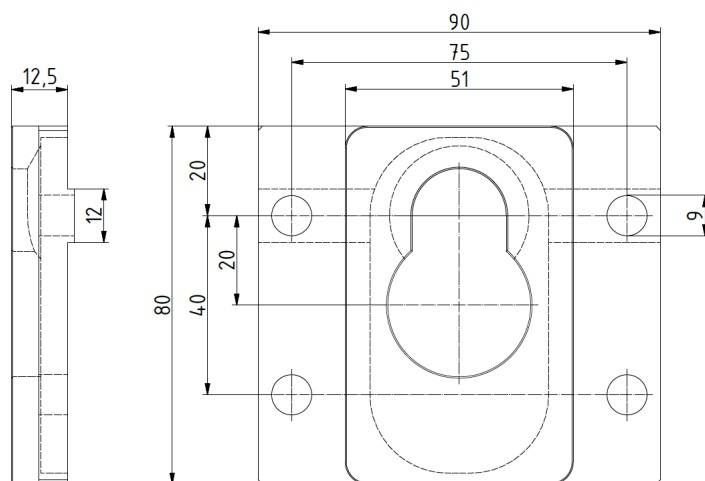
Lock plate for MSI 45x60S profile



Profilgröße Profile size	Artikelnummer/order number	Gewicht / Weight	Werkstoff / Material	Oberfläche/Treatment
45x60S	800032594	267 g	C45	Brüniert / burnished

### Schlossplatte für R+K F30x80 Profil

Lock plate for R+K F30x80 profile

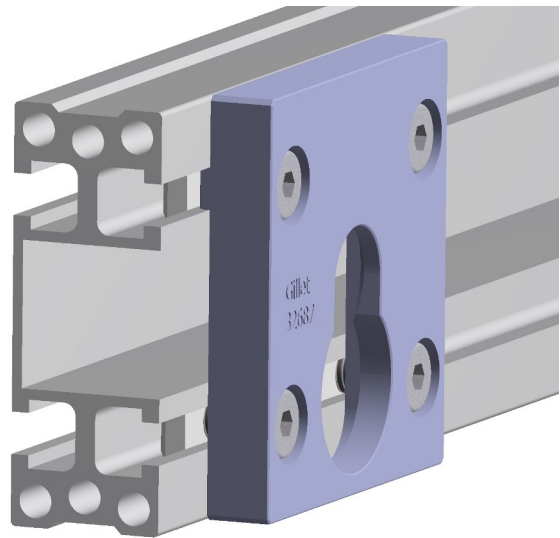
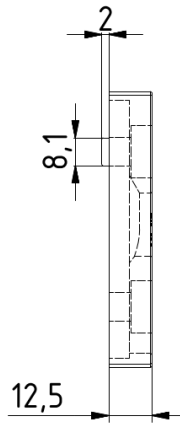
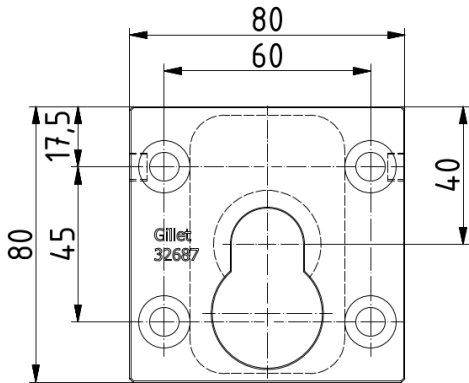


Profilgröße Profile size	Artikelnummer/order number	Gewicht / Weight	Werkstoff / Material	Oberfläche/Treatment
F30x80	800032597	364 g	C45	Brüniert / burnished

## Greifer System Komponenten / Modular Tooling System

### Schlossplatte für Misati P-30x80A-L

Lock plate for Misati P-30x80A-L



Profilgröße Profile size	Artikelnummer/order number	Gewicht / Weight	Werkstoff / Material	Oberfläche/Treatment
45x60S	800032687	138 g	Alu	Hartcoatiert / hard coated

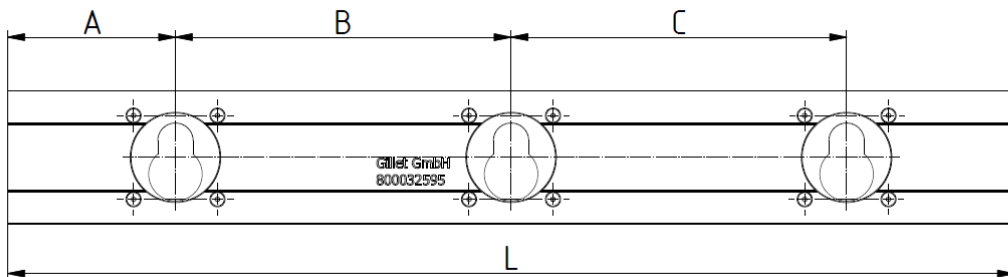
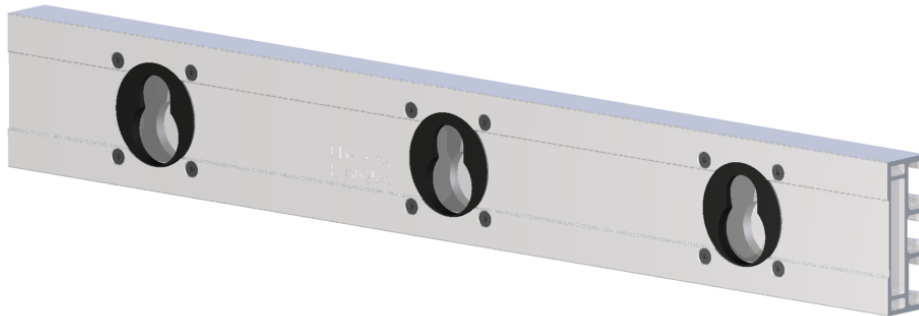
## Greifer System Komponenten / Modular Tooling System

### Hilfsschienenprofil 80x30 komplett mit Schlossplatte

Auxiliary bar profile 80x30 with lock plates

Bestellangaben / order information

<b>Profil 80x30</b>	-	<b>L</b>	/	<b>A</b>	/	<b>B</b>	/	<b>C</b>	/	.....	/	<b>G</b>
Hilfsschienenprofil		Länge in mm		Abstand der ersten Platte vom Profildende		Abstand der Zweiten von der ersten Platte		Abstand der Dritten von der zweiten Platte				
Auxiliary Bar Profile		Total Length		Distance from the edge of the profile to the first plate		Distance from the first plate to the second plate		Distance from the second plate to the third plate				



**Werkstoff** : Aluminium + Stahl

**Oberfläche** : Eloxiert und Brünierung

**Schlossplatte** :

**Bestellbeispiel** / Order example

**Material** : Aluminium and Steel

**Treatment** : Natural anodize and Bluing

800015190

**Profil 80x30—1850/175/750/750  
+ 800015190**

**Einbau und Dimensionierung /**

Einbaulage / Installation position	beliebig
Lochstichabstand / Hole distance	Maß A 50-300 mm
Lochstichabstände / Hole distance	Maß B 200-1000 mm
Fertigungslängen / Production lengths	250 mm—4500 mm



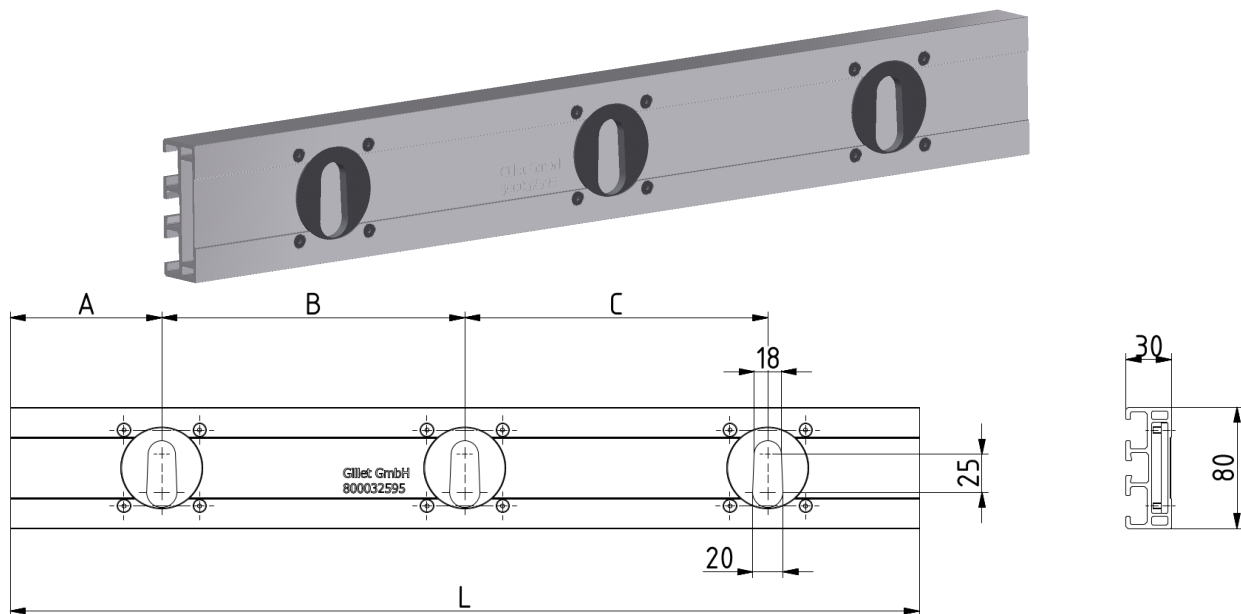
## Greifer System Komponenten / Modular Tooling System

### Hilfsschienenprofil 80x30 komplett mit Schlossplatte

Auxiliary bar profile 80x30 with lock plates

Bestellangaben / order information

Profil 80x30	-	L	/	A	/	B	/	C	/	.....	/	G
<b>I</b>		<b>I</b>		<b>I</b>		<b>I</b>		<b>I</b>		<b>I</b>		<b>I</b>
Hilfsschienenprofil		Länge in mm		Abstand der ersten Platte vom Profilende		Abstand der Zweiten von der ersten Platte		Abstand der Dritten von der zweiten Platte				
Auxiliary Bar Profile		Total Length		Distance from the edge of the profile to the first plate		Distance from the first plate to the second plate		Distance from the second plate to the third plate				



**Werkstoff** : Aluminium + Stahl

**Material** : Aluminium and Steel

**Oberfläche** : Eloxiert und Brünierung

**Treatment** : Natural anodize and Bluing

**Schlossplatte** :

800021489

**Bestellbeispiel** / Order example

Profil 80x30—1850/175/750/750  
+ 800021489

**Einbau und Dimensionierung** /

Einbaulage / Installation position

beliebig

Lochstichabstand / Hole distance

Maß A 50-300 mm

Lochstichabstände / Hole distance

Maß B 200-1000 mm

Fertigungslängen / Production lengths

250 mm—4500 mm

## Greifer System Komponenten / Modular Tooling System

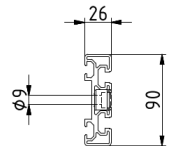
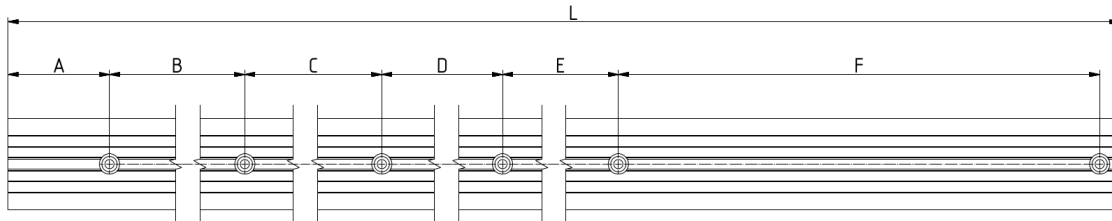
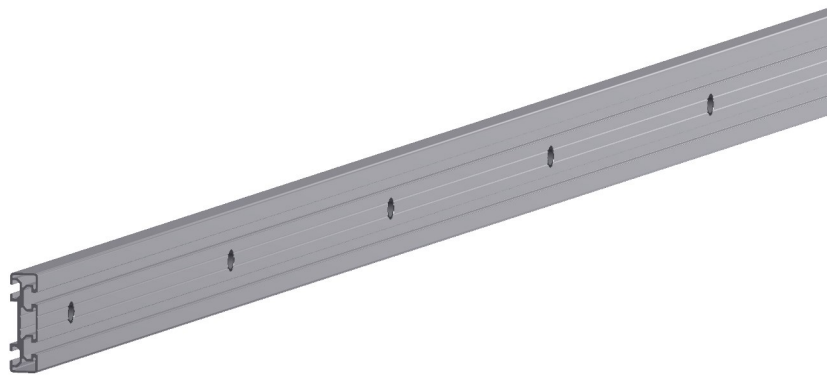
### Hilfsschienenprofil 90x26 komplett mit Schlossplatte

Auxiliary bar profile 90x26 with mounted lock plates

Bestellangaben / order information



Hilfsschienenprofil	Länge in mm	Abstand der 1 Befestigung vom Profilenende	Abstand der 2 Befestigung von der 1 Befestigung	Abstand der 3 Befestigung von der 2 Befestigung
Auxiliary Bar Profile	Total Length	Distance from the edge of the profile to the first lock	Distance from the first lock to the second lock	Distance from the second lock to the third lock



**Werkstoff** : Aluminium + Stahl

**Oberfläche** : Eloxiert und Brünierung

**Befestigung:**

**Bestellbeispiel** / Order example

**Material** : Aluminium and Steel

**Treatment** : Natural anodize and Bluing

800031892

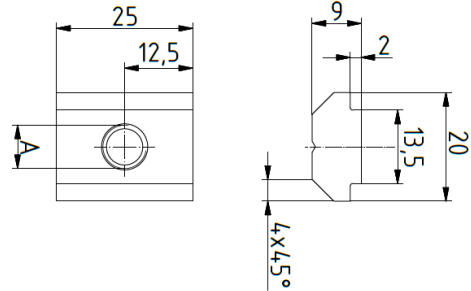
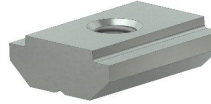
**Profil 90x26—2495/475/475/475/475/475  
+ 800031892**

**Einbau und Dimensionierung /**

Einbaulage / Installation position	horizontal
Lochstichabstand / Hole distance	Maß A 20-300 mm
Lochstichabstände / Hole distance	Maß B 200-1000 mm
Fertigungslängen / Production lengths	250 mm—5000 mm

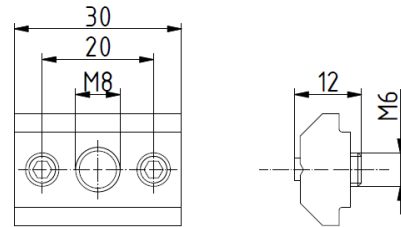
## Greifer System Komponenten / Modular Tooling System

### Nutenstein T-Slot thread



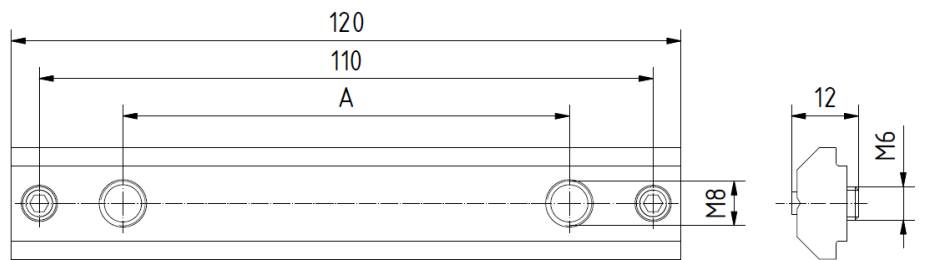
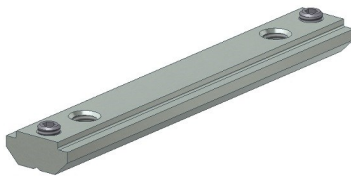
Maß A	Artikelnummer/order number	Gewicht / Weight	Werkstoff / Material	Oberfläche/Treatment
M6	800020060	28 g	C45	galvanisch verzinkt /
M8	800019345	27 g	C45	galvanisch verzinkt
M10	800019346	26 g	C45	galvanisch verzinkt

### Nutenstein T-Slot thread



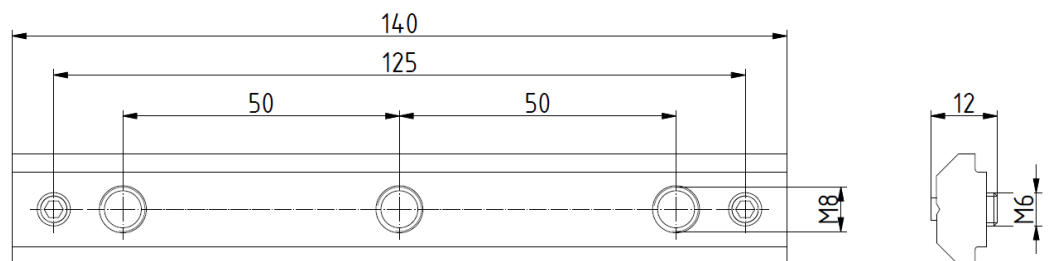
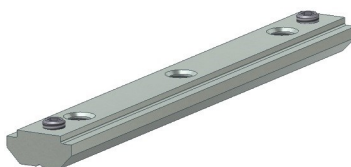
Maß A	Artikelnummer/order number	Gewicht / Weight	Werkstoff / Material	Oberfläche/Treatment
M8	800019850	34 g	C45	galvanisch verzinkt

### Nutenstein T-Slot thread



Maß A	Artikelnummer/order number	Gewicht / Weight	Werkstoff / Material	Oberfläche/Treatment
85 mm	800019347	138 g	C45	galvanisch verzinkt
80 mm	800019476	138 g	C45	galvanisch verzinkt

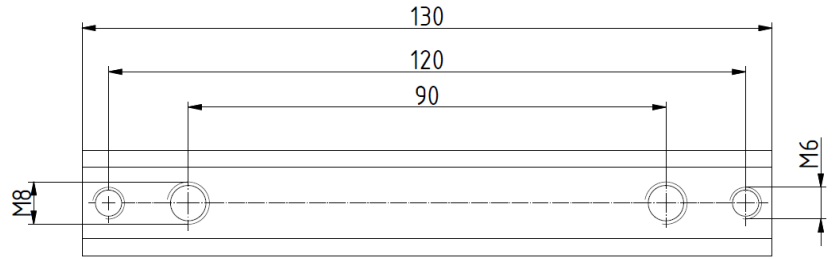
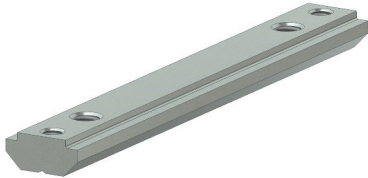
### Nutenstein T-Slot thread



Maß A	Artikelnummer/order number	Gewicht / Weight	Werkstoff / Material	Oberfläche/Treatment
3x M8	800019478	159 g	C45	galvanisch verzinkt

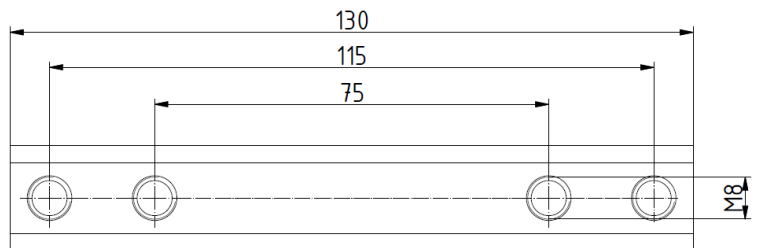
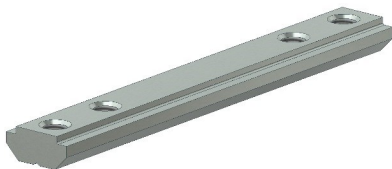
## Greifer System Komponenten / Modular Tooling System

**Nutenstein**  
T-Slot thread



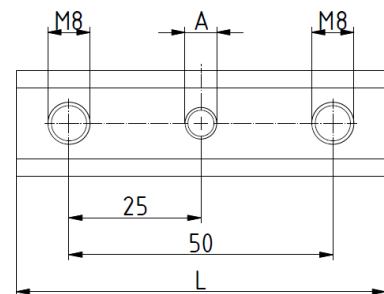
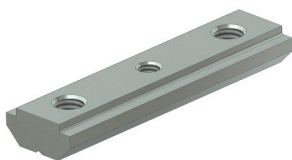
Maß A	Artikelnummer/order number	Gewicht / Weight	Werkstoff / Material	Oberfläche/Treatment
2xM8/2xM6	800029872	146 g	C45	galvanisch verzinkt

**Nutenstein**  
T-Slot thread



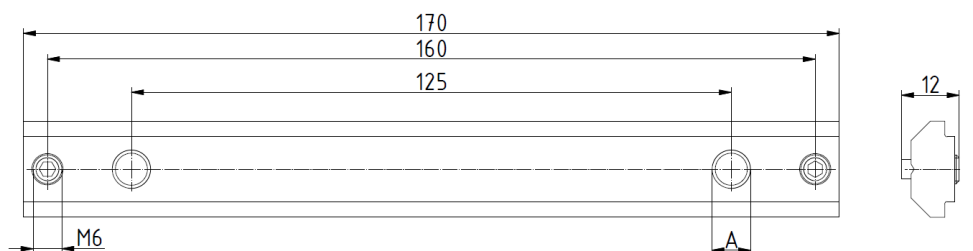
Maß A	Artikelnummer/order number	Gewicht / Weight	Werkstoff / Material	Oberfläche/Treatment
2xM8/2xM6	800021212	145 g	C45	galvanisch verzinkt

**Nutenstein**  
T-Slot thread



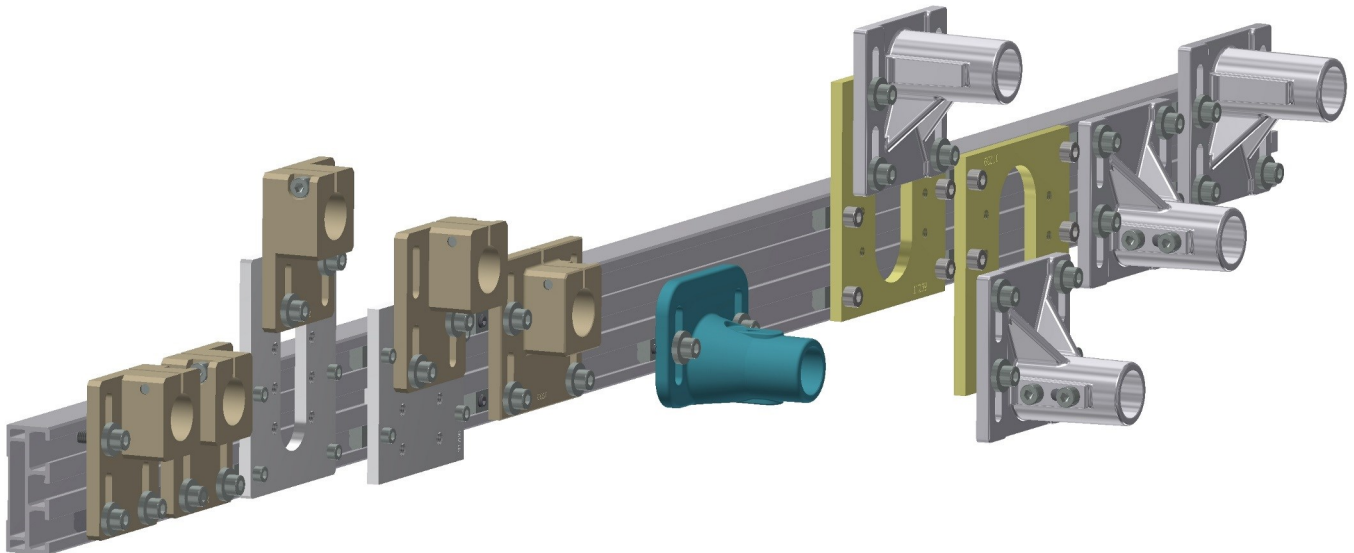
Maß A	Maß L	Artikelnummer/order number	Gewicht / Weight	Werkstoff / Material	Oberfläche/Treatment
M6	70	800029628	76 g	C45	galvanisch verzinkt
M8	70	800031037	76 g	C45	galvanisch verzinkt
-	70	800026106	76 g	C45	galvanisch verzinkt
-	80	800028007	90 g	C45	galvanisch verzinkt

**Nutenstein**  
T-Slot thread



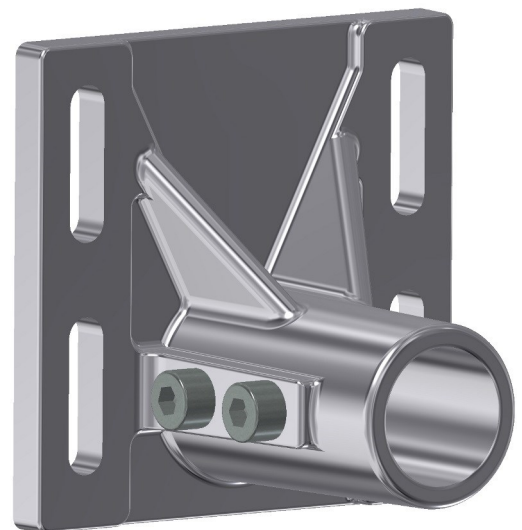
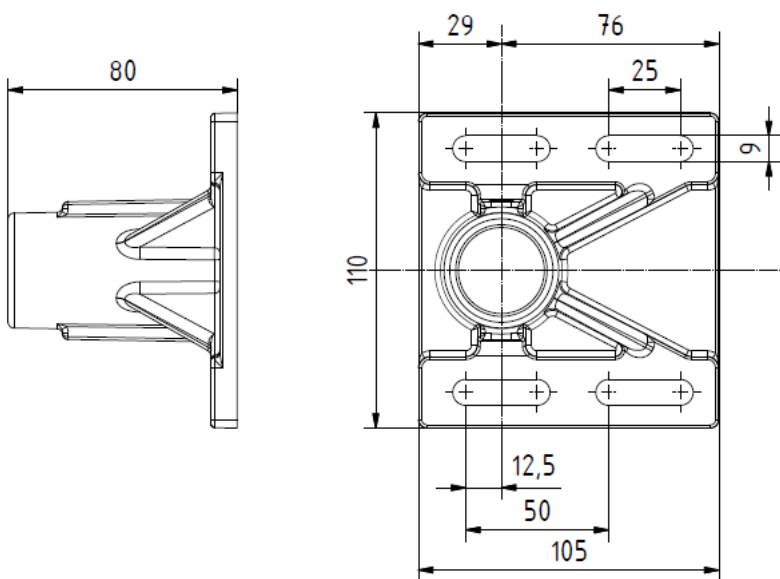
Maß A	Artikelnummer/order number	Gewicht / Weight	Werkstoff / Material	Oberfläche/Treatment
M8	800022765	197 g	C45	galvanisch verzinkt
M10	800029871	195 g	C45	galvanisch verzinkt

## Greifer System Komponenten / Modular Tooling System



### Greiferhalter + Verlagerungsplatten / Support + plates

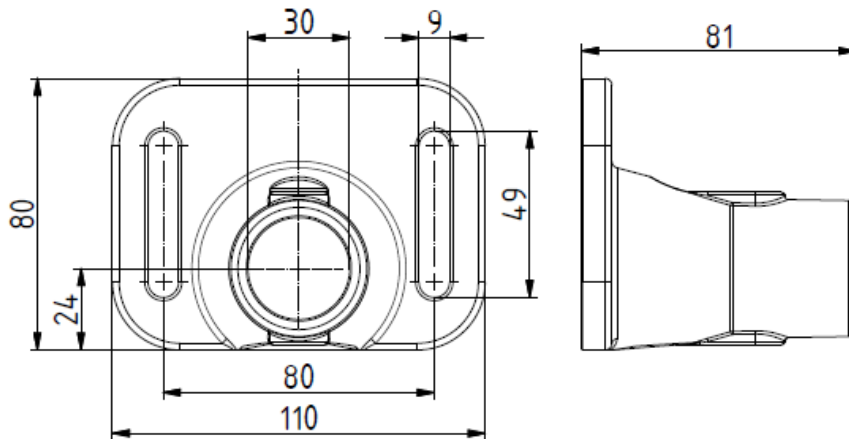
#### Greiferhalter Support



Artikelnummer/order number	Gewicht / Weight	Werkstoff / Material	Oberfläche/Treatment
800020491	436g	G-AlZn10Si8Mg	-

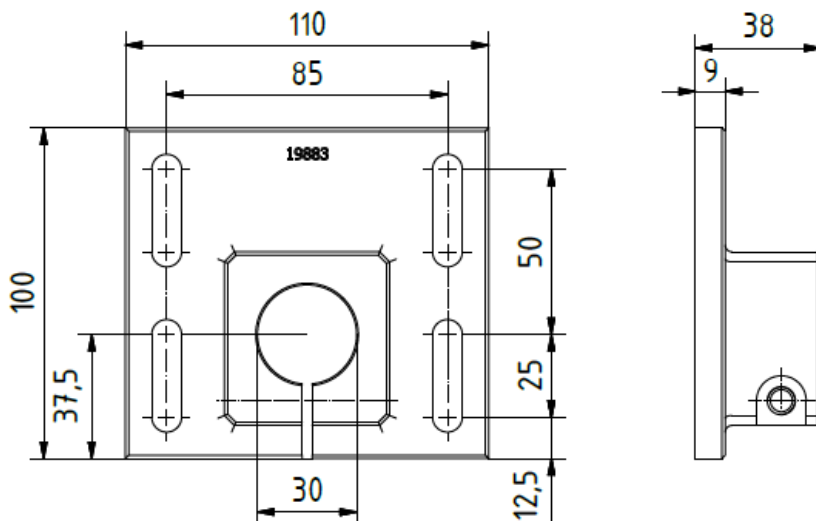
## Greifer System Komponenten / Modular Tooling System

### Greiferhalter Support



Artikelnummer/order number	Gewicht / Weight	Werkstoff / Material	Oberfläche/Treatment
800024587	350 g	EN AW-6082 T6	-

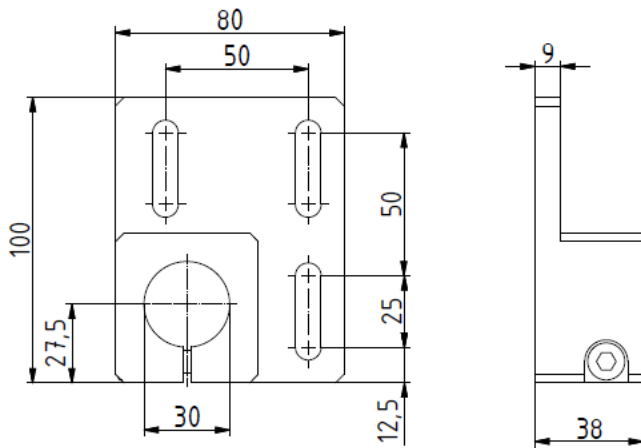
### Greiferhalter Support



Artikelnummer/order number	Gewicht / Weight	Werkstoff / Material	Oberfläche/Treatment
800019883	370 g	AlZnMgCu 0,5 F40	Eloxiert E6/EV1

## Greifer System Komponenten / Modular Tooling System

### Greiferhalter Support

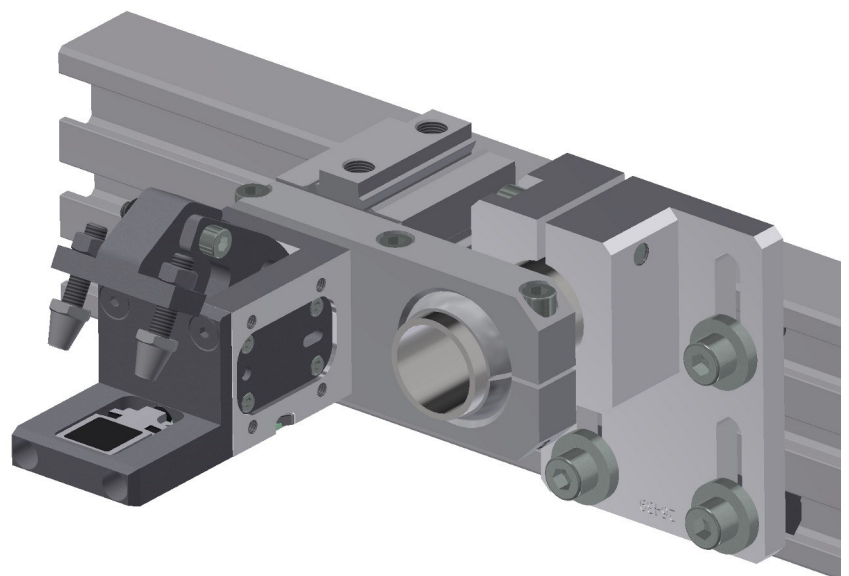


800026439 / 800021371



Artikelnummer/order number	Gewicht / Weight	Werkstoff / Material	Oberfläche/Treatment
800021371	314 g	AlZnMgCu0,5 F40	Eloxiert E6/EV1
800026439	314 g	AlZnMgCu0,5 F40	Eloxiert E6/EV1

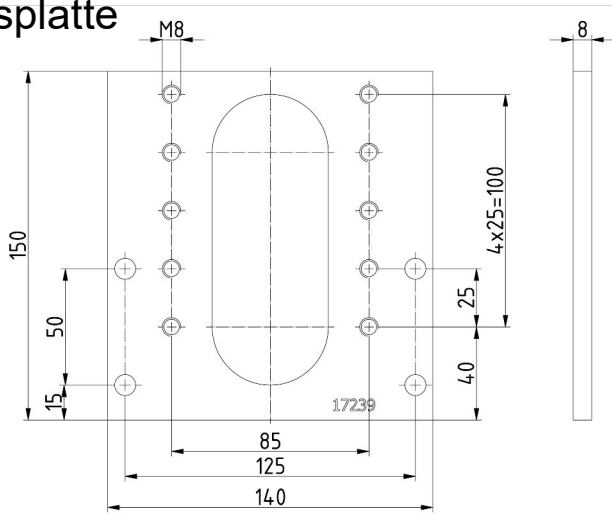
### Anwendungsbeispiel Application example



## Greifer System Komponenten / Modular Tooling System

### Verlagerungsplatte

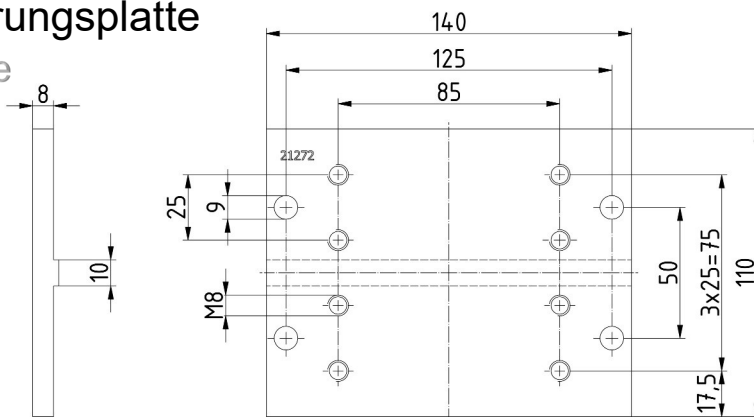
Shift plate



Artikelnummer/order number	Gewicht / Weight	Werkstoff / Material	Oberfläche/Treatment
800017239	327 g	AlZnMgCu0,5 F40	-

### Verlagerungsplatte

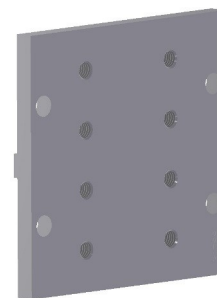
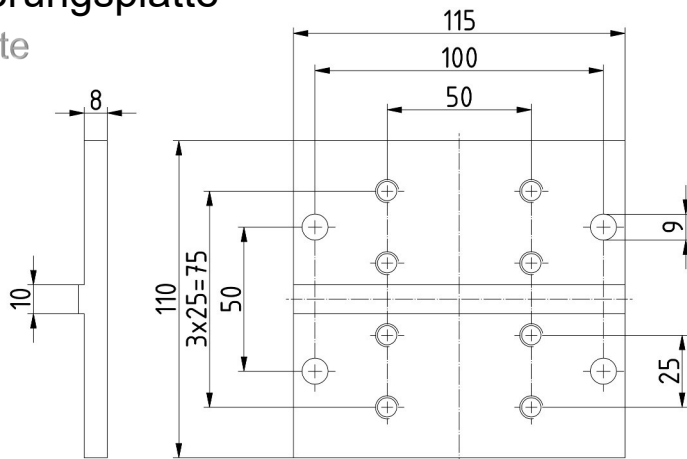
Shift plate



Artikelnummer/order number	Gewicht / Weight	Werkstoff / Material	Oberfläche/Treatment
800021272	338 g	AlZnMgCu0,5 F40	Eloxiert E6/EV1

### Verlagerungsplatte

Shift plate



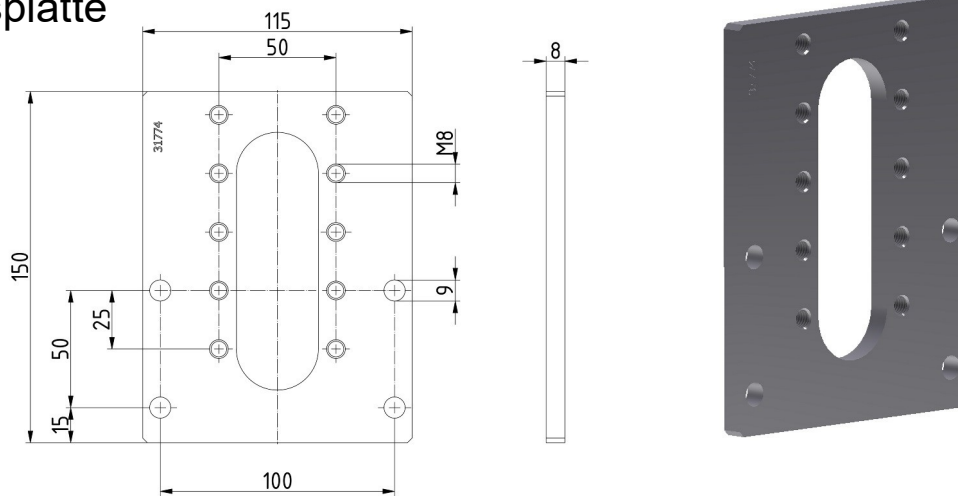
Artikelnummer/order number	Gewicht / Weight	Werkstoff / Material	Oberfläche/Treatment
800031788	270 g	AlZnMgCu0,5 F40	Eloxiert E6/EV1



## Greifer System Komponenten / Modular Tooling System

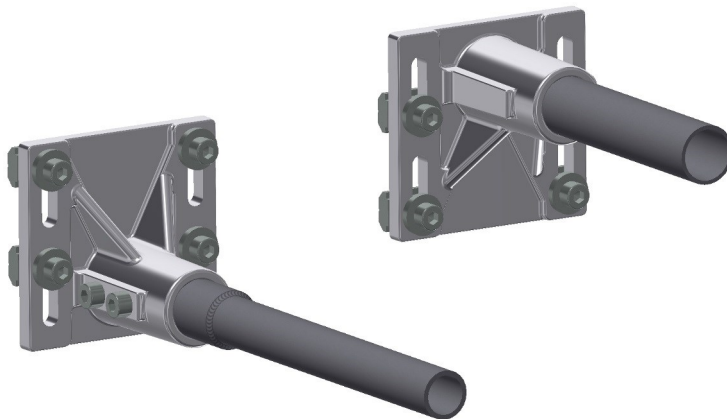
### Verlagerungsplatte

Shift plate



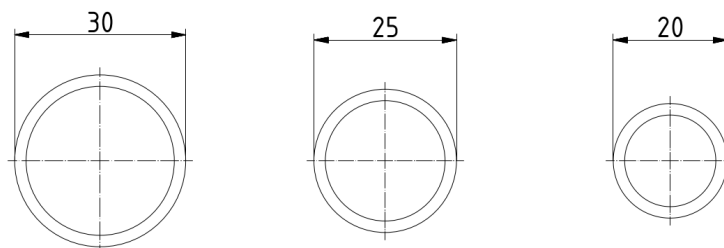
Artikelnummer/order number	Gewicht / Weight	Werkstoff / Material	Oberfläche/Treatment
800031774	290 g	AlZnMgCu0,5 F40	-

## Rohre / Tubes



### Rohre Zuschnitte

tubes

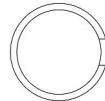
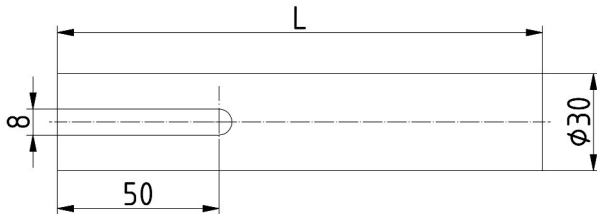


Rohr	Maß L	Artikelnummer/order number	Gewicht / Weight	Werkstoff / Material
20x2	___	Rohr 20x2_L=___	0,888 kg/m	DIN EN 10305-4 E235+N
25x2	___	Rohr 25x2_L=___	1,134 kg/m	DIN EN 10305-4 E235+N
30x2	___	Rohr 30x2_L=___	1,383 kg/m	DIN EN 10305-4 E235+N

## Greifer System Komponenten / Modular Tooling System

Rohr mit Nut 30x2-L= \_\_\_\_\_

Tube with slot 30x2 -L= \_\_\_\_\_

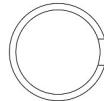
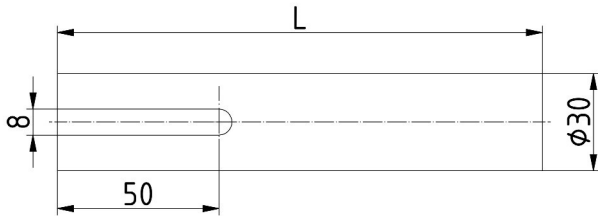


Rohr (mm)	Maß L (mm)	Artikelnummer/order number	Gewicht / Weight	Werkstoff / Material
30x2	80	800016907	104 g	DIN EN 10305-4 E235+N
30x2	90	800017387	110g	DIN EN 10305-4 E235+N
30x2	100	800016883	131 g	DIN EN 10305-4 E235+N
30x2	105	800017119	138 g	DIN EN 10305-4 E235+N
30x2	110	800016941	145 g	DIN EN 10305-4 E235+N
30x2	115	800017117	152 g	DIN EN 10305-4 E235+N
30x2	120	800016884	159 g	DIN EN 10305-4 E235+N
30x2	125	800020117	166 g	DIN EN 10305-4 E235+N
30x2	130	800017122	173 g	DIN EN 10305-4 E235+N
30x2	140	800016908	187 g	DIN EN 10305-4 E235+N
30x2	145	800020119	194 g	DIN EN 10305-4 E235+N
30x2	150	800016949	200 g	DIN EN 10305-4 E235+N
30x2	155	800016655	207 g	DIN EN 10305-4 E235+N
30x2	160	800016939	214 g	DIN EN 10305-4 E235+N
30x2	165	800017123	221 g	DIN EN 10305-4 E235+N
30x2	170	800016674	228 g	DIN EN 10305-4 E235+N
30x2	175	800019971	235 g	DIN EN 10305-4 E235+N
30x2	180	800017126	242 g	DIN EN 10305-4 E235+N
30x2	185	800020121	249 g	DIN EN 10305-4 E235+N
30x2	190	800017127	256 g	DIN EN 10305-4 E235+N
30x2	195	800017128	263 g	DIN EN 10305-4 E235+N
30x2	200	800017056	269 g	DIN EN 10305-4 E235+N
30x2	210	800017057	283 g	DIN EN 10305-4 E235+N
30x2	220	800017083	297 g	DIN EN 10305-4 E235+N
30x2	230	800021038	311 g	DIN EN 10305-4 E235+N
30x2	235	800017006	318 g	DIN EN 10305-4 E235+N

## Greifer System Komponenten / Modular Tooling System

Rohr mit Nut 30x2-L= \_\_\_\_\_

Tube with slot 30x2 -L= \_\_\_\_\_

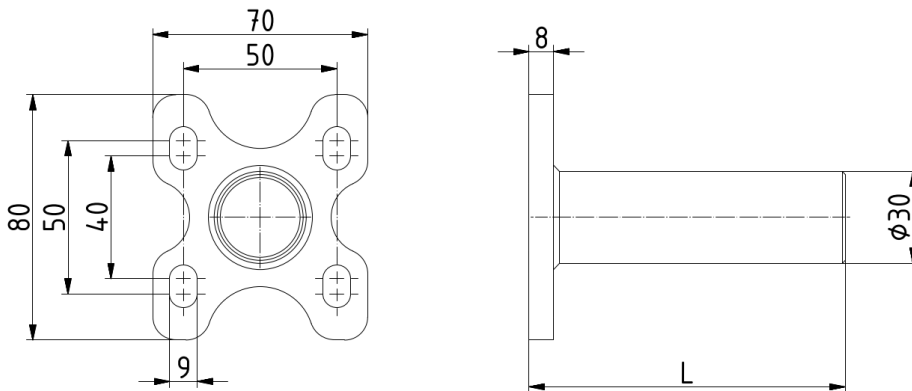
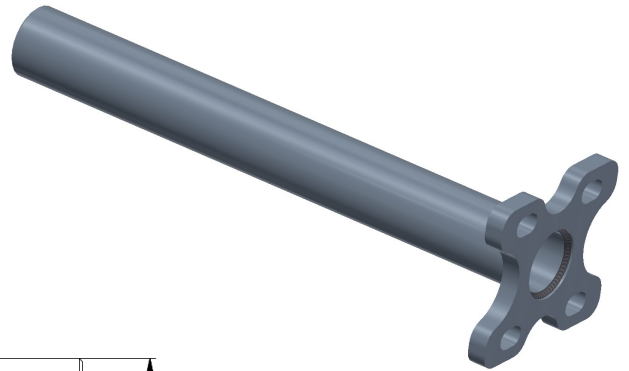


Rohr (mm)	Maß L (mm)	Artikelnummer/order number	Gewicht / Weight	Werkstoff / Material
30x2	240	800017097	325 g	DIN EN 10305-4 E235+N
30x2	250	800017098	338 g	DIN EN 10305-4 E235+N
30x2	255	800017005	346 g	DIN EN 10305-4 E235+N
30x2	260	800017059	352 g	DIN EN 10305-4 E235+N
30x2	270	800017033	366 g	DIN EN 10305-4 E235+N
30x2	280	800017034	380 g	DIN EN 10305-4 E235+N
30x2	290	800017058	394 g	DIN EN 10305-4 E235+N
30x2	300	800016983	408 g	DIN EN 10305-4 E235+N
30x2	305	800023559	415 g	DIN EN 10305-4 E235+N
30x2	310	800016993	422 g	DIN EN 10305-4 E235+N
30x2	315	800019157	429 g	DIN EN 10305-4 E235+N
30x2	320	800017092	436 g	DIN EN 10305-4 E235+N
30x2	330	800017114	450 g	DIN EN 10305-4 E235+N
30x2	340	800017106	464 g	DIN EN 10305-4 E235+N
30x2	350	800017032	477 g	DIN EN 10305-4 E235+N
30x2	360	800017031	491 g	DIN EN 10305-4 E235+N
30x2	370	800016994	504 g	DIN EN 10305-4 E235+N
30x2	380	800017116	518 g	DIN EN 10305-4 E235+N
30x2	400	800016969	532 g	DIN EN 10305-4 E235+N
30x2	450	800019968	607 g	DIN EN 10305-4 E235+N
30x2	500	800019967	684 g	DIN EN 10305-4 E235+N

## Greifer System Komponenten / Modular Tooling System

Flansch mit Rohr 90 ° - 30x2-L= \_\_\_\_\_

Flange with Tube 90° - 30x2 -L= \_\_\_\_\_

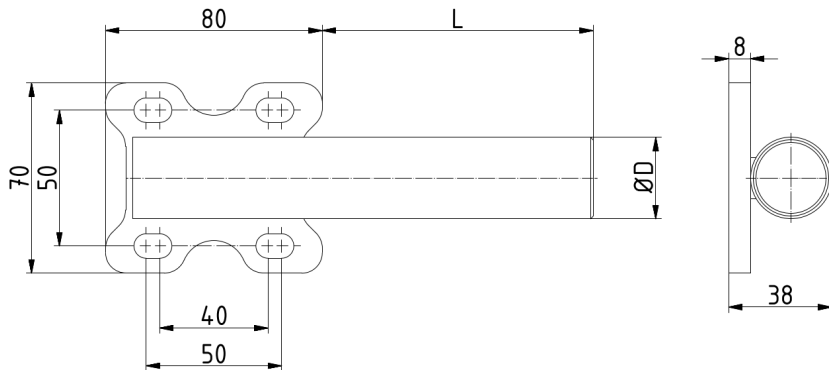


Ø D Rohr (mm)	Maß L (mm)	Artikelnummer/order number	Gewicht / Weight	Werkstoff / Material
30x2	100	700032632	325 g	DIN EN 10305-4 E235+N
30x2	150	700032633	395 g	DIN EN 10305-4 E235+N
30x2	200	700032634	463 g	DIN EN 10305-4 E235+N
30x2	250	700032635	533 g	DIN EN 10305-4 E235+N
30x2	300	700032636	602 g	DIN EN 10305-4 E235+N
30x2	350	700032637	672 g	DIN EN 10305-4 E235+N
30x2	400	700032638	741 g	DIN EN 10305-4 E235+N
30x2	450	700032639	810 g	DIN EN 10305-4 E235+N
30x2	500	700032640	880 g	DIN EN 10305-4 E235+N
25x2	100	700032655	310 g	DIN EN 10305-4 E235+N
25x2	150	700032656	367 g	DIN EN 10305-4 E235+N
25x2	200	700032657	424 g	DIN EN 10305-4 E235+N
25x2	250	700032658	481 g	DIN EN 10305-4 E235+N
20x2	100	700032661	297 g	DIN EN 10305-4 E235+N
20x2	150	700032662	341 g	DIN EN 10305-4 E235+N
20x2	200	700032663	385 g	DIN EN 10305-4 E235+N
20x2	250	700032664	429 g	DIN EN 10305-4 E235+N

## Greifer System Komponenten / Modular Tooling System

Flansch mit Rohr 0° - 30x2-L= \_\_\_\_\_

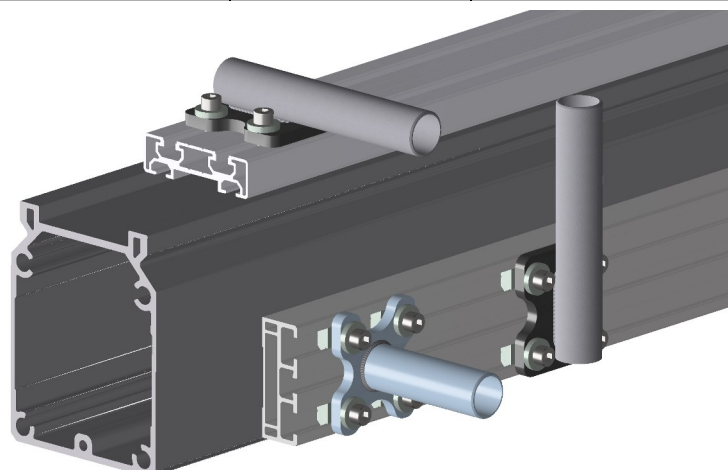
Flange with Tube 0° - 30x2 -L= \_\_\_\_\_



Ø D Rohr (mm)	Maß L (mm)	Artikelnummer/order number	Gewicht / Weight	Werkstoff / Material
30x2	100	700032642	452 g	DIN EN 10305-4 E235+N
30x2	150	700032643	521 g	DIN EN 10305-4 E235+N
30x2	200	700032644	590 g	DIN EN 10305-4 E235+N
30x2	250	700032645	659 g	DIN EN 10305-4 E235+N
30x2	300	700032646	728 g	DIN EN 10305-4 E235+N
30x2	350	700032647	797 g	DIN EN 10305-4 E235+N
30x2	400	700032648	866 g	DIN EN 10305-4 E235+N
30x2	450	700032649	935 g	DIN EN 10305-4 E235+N
30x2	500	700032652	1004 g	DIN EN 10305-4 E235+N
25x2	100	700032653	409 g	DIN EN 10305-4 E235+N
25x2	150			DIN EN 10305-4 E235+N
25x2	200			DIN EN 10305-4 E235+N
25x2	250			DIN EN 10305-4 E235+N
20x2	100			DIN EN 10305-4 E235+N
20x2	150			DIN EN 10305-4 E235+N
20x2	200			DIN EN 10305-4 E235+N
20x2	250			DIN EN 10305-4 E235+N

### Anwendungsbeispiel

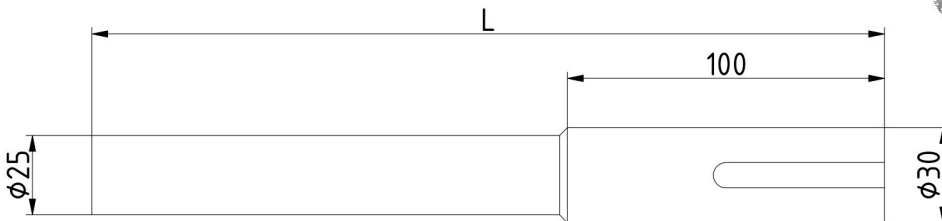
Application example



## Greifer System Komponenten / Modular Tooling System

Rohr mit Nut 30/25-L= \_\_\_\_\_

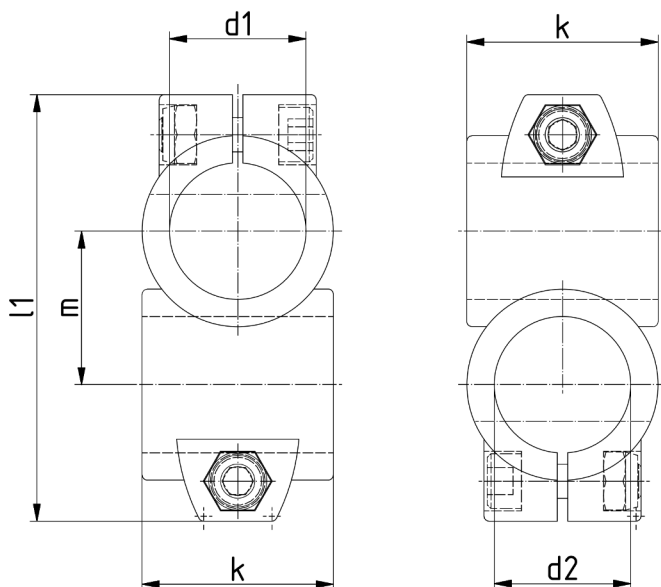
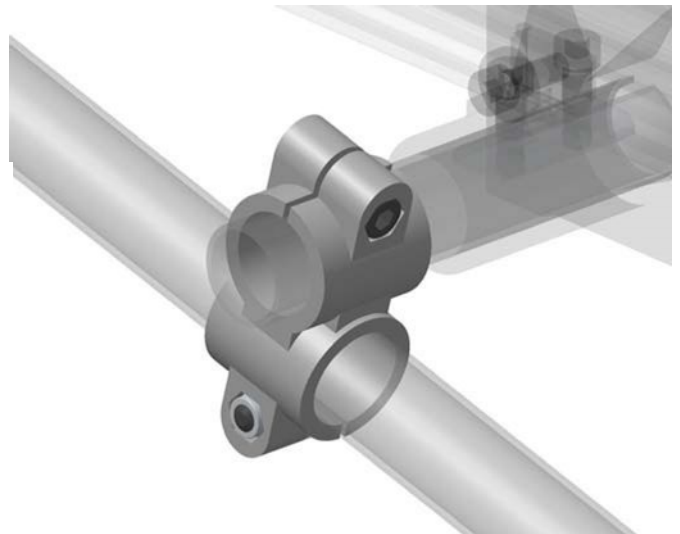
Tube with slot 30/25-L= \_\_\_\_\_



Rohr	Maß L	Artikelnummer/order number	Gewicht / Weight	Werkstoff / Material
30x2,5/25x2	210	800017081	345 g	DIN EN 10305-4 E235+N
30x2,5/25x2	250	800019904	400 g	DIN EN 10305-4 E235+N
30x2,5/25x2	300	800017178	468 g	DIN EN 10305-4 E235+N

## Kreuz-Klemmverbinder 30/30

Two way connector 30/30

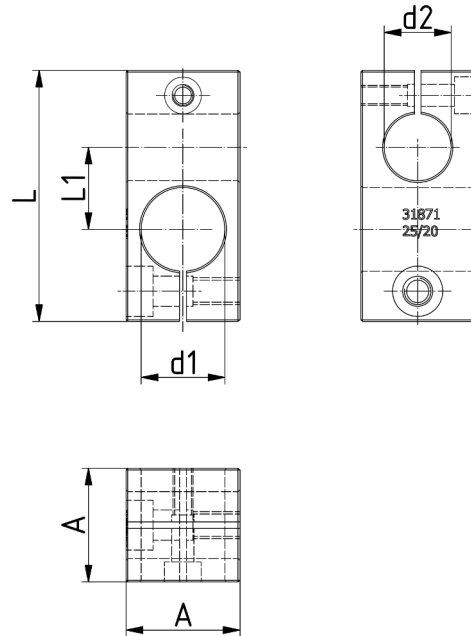


d1	d2	k	l1	m	Artikelnummer/order number	Gewicht / Weight	Werkstoff / Material
30	30	40	97	33	800020061	172 g	Aluminium
40	40	56	125	45	800032678	450 g	Aluminium

## Greifer System Komponenten / Modular Tooling System

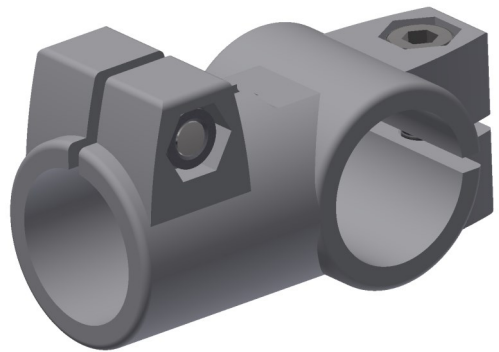
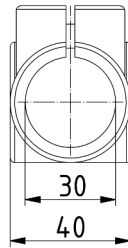
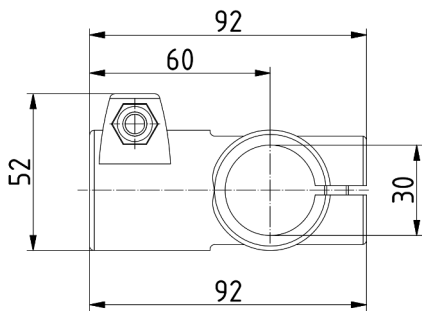
### Kreuz-Klemmverbinder Blockform

Two way connector



d1	d2	L	L1	A	Artikelnummer/order number	Gewicht / Weight	Werkst. / Material	Oberfläche/ Treatment
20	20	65	22	27	800031830	90 g	EN AW 7022	Eloxiert E6/EV1
25	25	82	27	34	800031831	152 g	EN AW 7022	Eloxiert E6/EV1
30	30	92	33	40	800031832	270 g	EN AW 7022	Eloxiert E6/EV1
20	25	75	24,5	34	800031871	190 g	EN AW 7022	Eloxiert E6/EV1
25	30	87	30	40	800031872	270 g	EN AW 7022	Eloxiert E6/EV1
40	40	115	42	50	800032676	440 g	EN AW 7022	Eloxiert E6/EV1

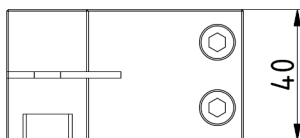
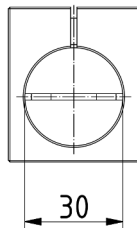
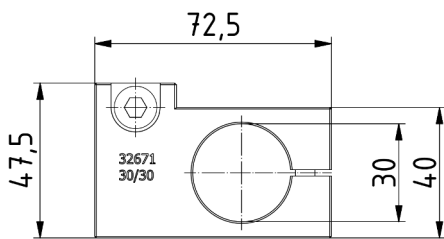
## Greifer System Komponenten / Modular Tooling System



Rohr	Artikelnummer/order number	Gewicht / Weight	Werkstoff / Material	Oberfläche/Treatment
30/30	800032675	195 g	Alu	matt blank

## Winkel-Klemmverbinder Blockform

Two way connector



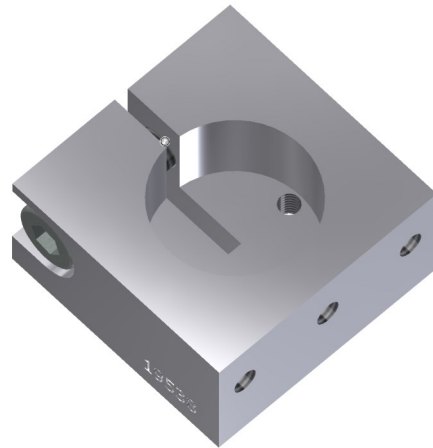
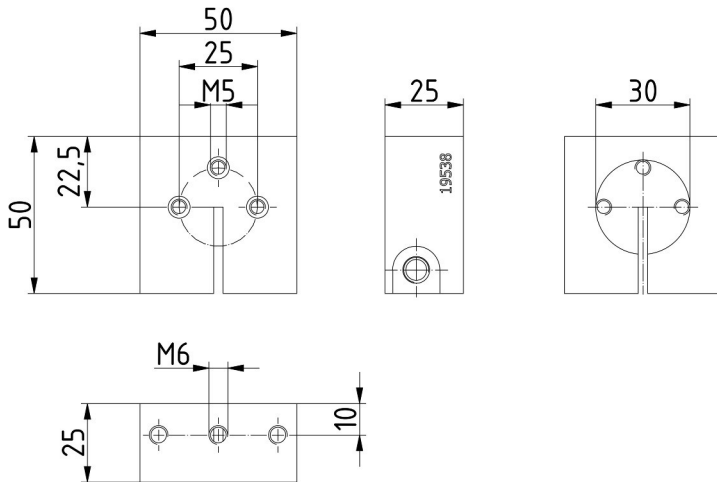
Rohr	Artikelnummer/order number	Gewicht / Weight	Werkstoff / Material	Oberfläche/Treatment
30/30	800032671	220 g	EN AW 7022	Eloxiert E6/EV1



## Greifer System Komponenten / Modular Tooling System

### Anschluss 30

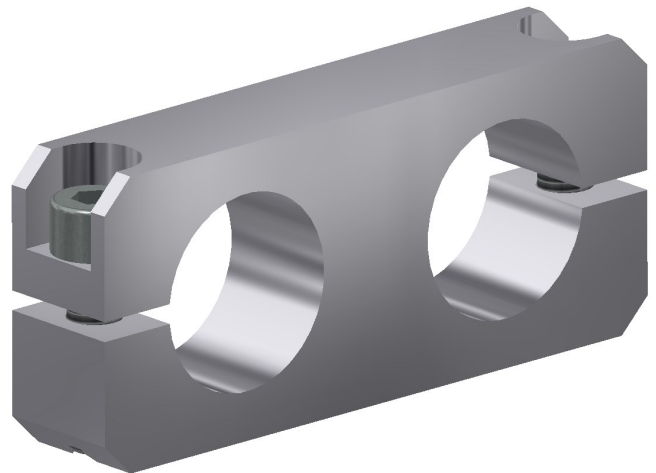
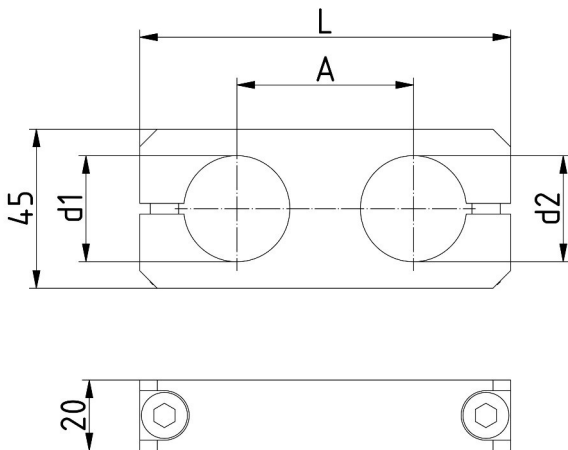
#### Connector 30



Rohr	Artikelnummer/order number	Gewicht / Weight	Werkstoff / Material
30	800019538	150 g	EN AW 7022

### Parallelverbinder

#### Parallel Connector

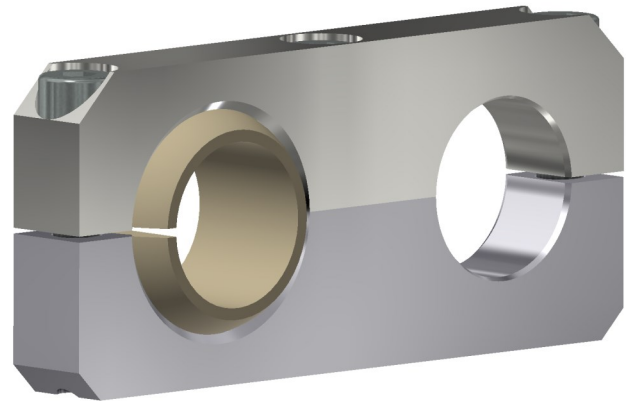
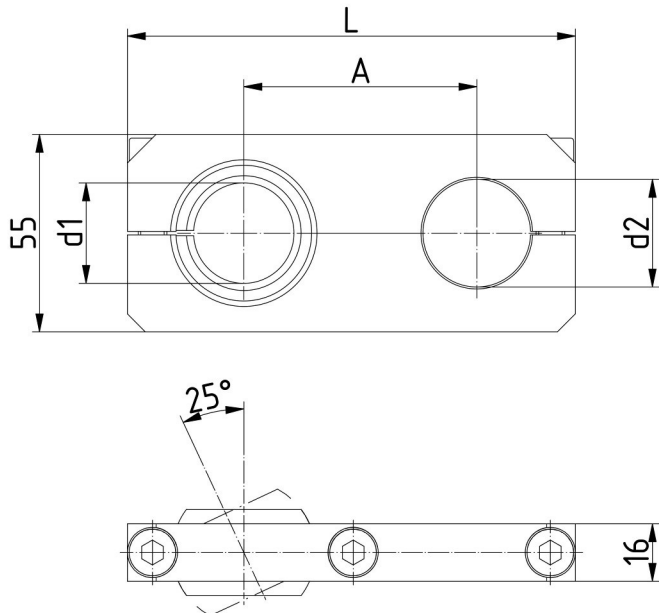


A	L	d1	d2	Artikelnummer/order number	Gewicht / Weight	Werkst. / Material	Oberfläche/Treatment
50	105	30	30	800022463	191 g	EN AW 7022	Eloxiert E6/EV1
75	130	30	30	800019933	250 g	EN AW 7022	Eloxiert E6/EV1
100	155	30	30	800021482	309 g	EN AW 7022	Eloxiert E6/EV1
125	180	30	30	800021484	370 g	EN AW 7022	Eloxiert E6/EV1
75	130	28	30	800022293	250 g	EN AW 7022	Eloxiert E6/EV1
75	125	25	25	800023704	250 g	EN AW 7022	Eloxiert E6/EV1
75	140	40	40	800032681	265 g	EN AW 7022	Eloxiert E6/EV1

## Greifer System Komponenten / Modular Tooling System

### Verbinder mit 1 Kugel

Connector with 1 ball

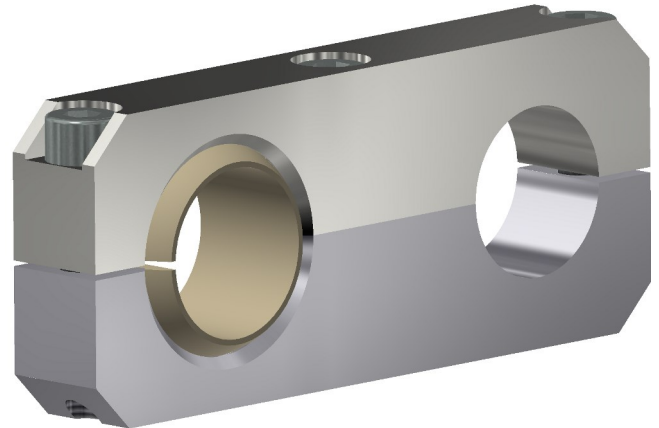
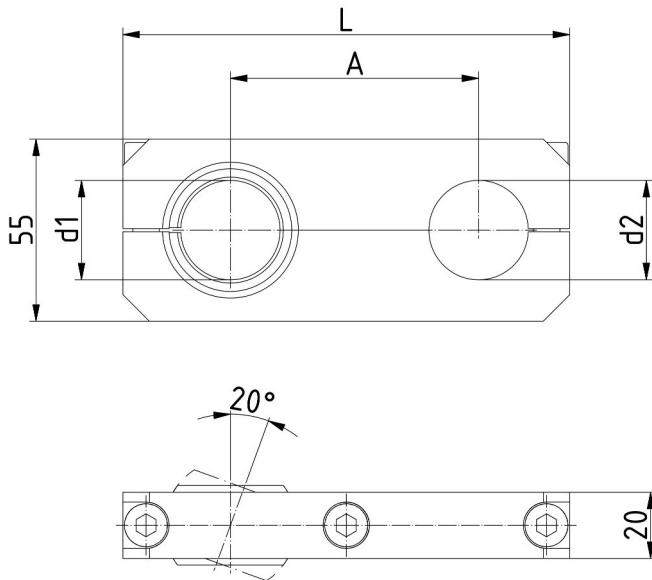


A	L	d1	d2	Artikelnummer/order number	Gewicht / Weight	Werkst. / Material	Oberfläche/Treatment
59	115	30	30	700022884	212 g	EN AW 7022	Eloxiert E6/EV1
65	125	28	30	700023208	286 g	EN AW 7022	Eloxiert E6/EV1
65	125	30	30	700025610	280 g	EN AW 7022	Eloxiert E6/EV1
69	129	28	30	700025613	282 g	EN AW 7022	Eloxiert E6/EV1
69	129	30	30	700022299	276 g	EN AW 7022	Eloxiert E6/EV1
75	135	28	30	700025616	363 g	EN AW 7022	Eloxiert E6/EV1
75	135	30	30	700025075	358 g	EN AW 7022	Eloxiert E6/EV1

## Greifer System Komponenten / Modular Tooling System

### Verbinder mit 1 Kugel

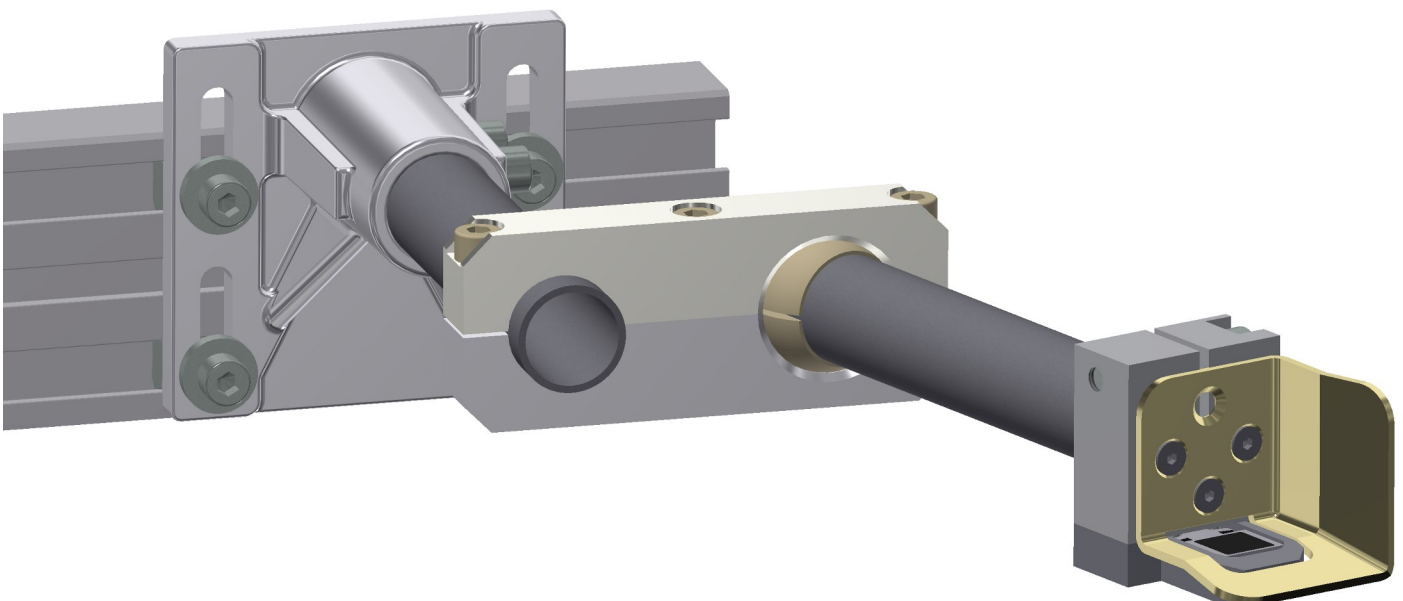
Connector with 1 ball



A	L	d1	d2	Artikelnummer/order number	Gewicht / Weight	Werkst. / Material	Oberfläche/Treatment
95	155	28	30	700024897	374 g	EN AW 7022	Eloxiert E6/EV1
95	155	30	30	700025619	368 g	EN AW 7022	Eloxiert E6/EV1
100	160	28	30	700022622	451 g	EN AW 7022	Eloxiert E6/EV1
100	160	30	30	700025100	445 g	EN AW 7022	Eloxiert E6/EV1

### Anwendungsbeispiel

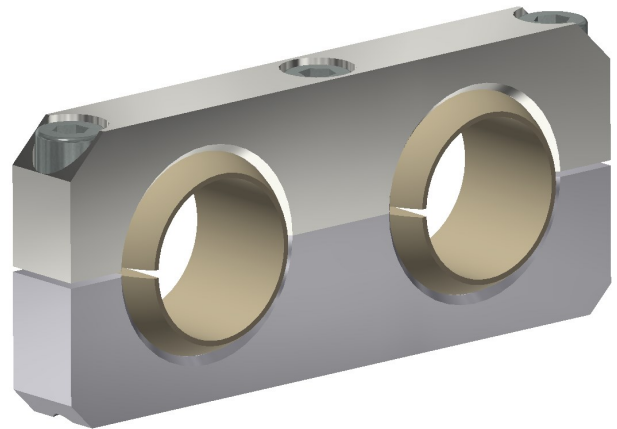
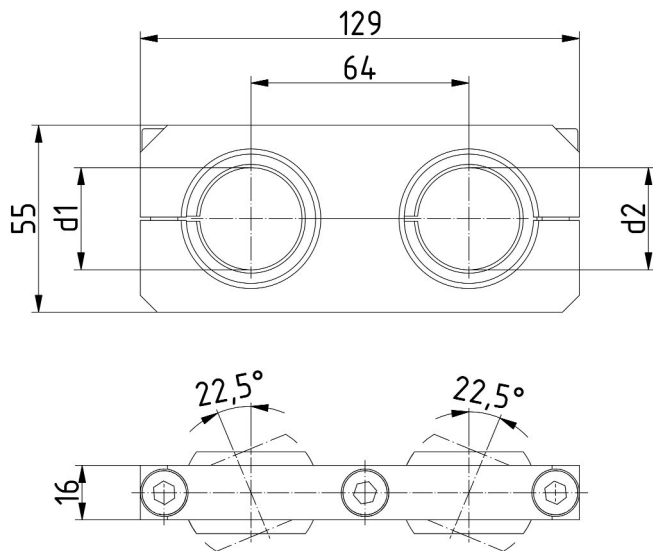
Application example



## Greifer System Komponenten / Modular Tooling System

### Verbinder mit 2 Kugel

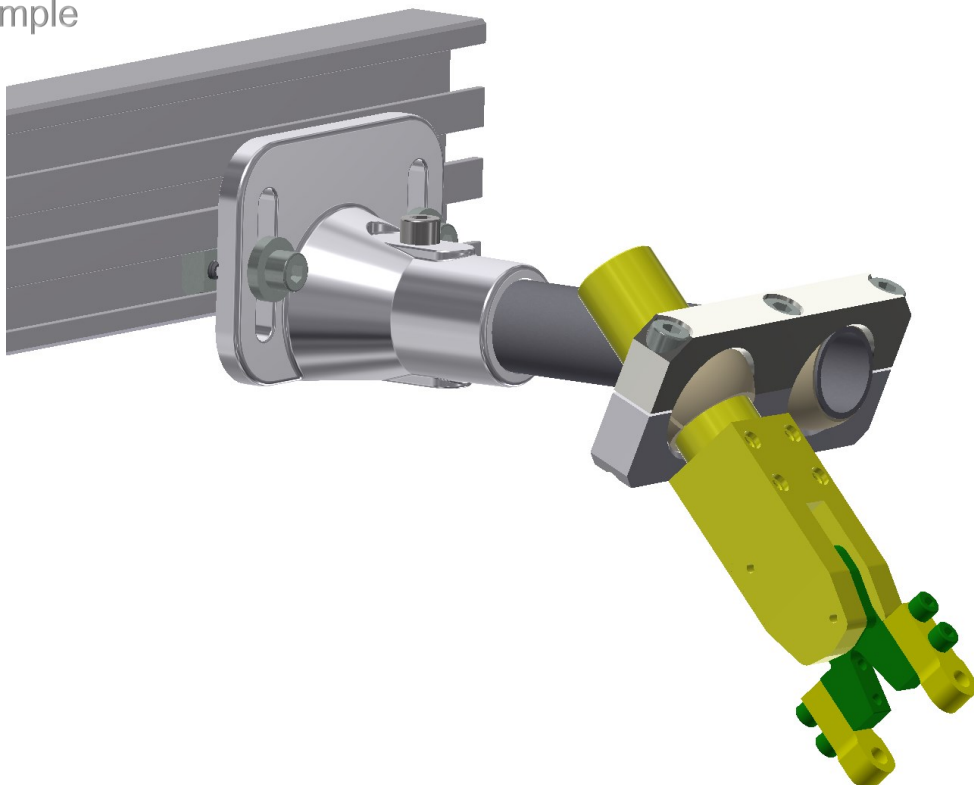
Connector with 2 ball



d1	d2	Artikelnummer/order number	Gewicht / Weight	Werkst. / Material	Oberfläche/Treatment
30	30	700021211	278 g	EN AW 7022	Eloxiert E6/EV1
28	30	700025626	290 g	EN AW 7022	Eloxiert E6/EV1

### Anwendungsbeispiel

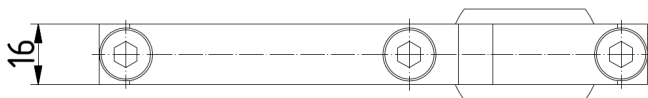
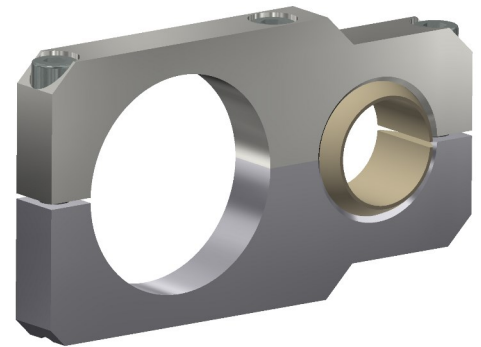
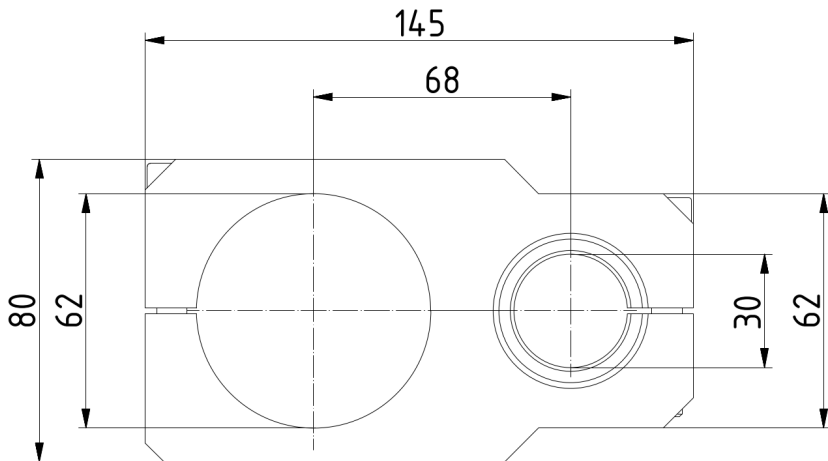
Application example



Greifer System Komponenten / Modular Tooling System

Adapter DESTACO 84A3-3 Serie

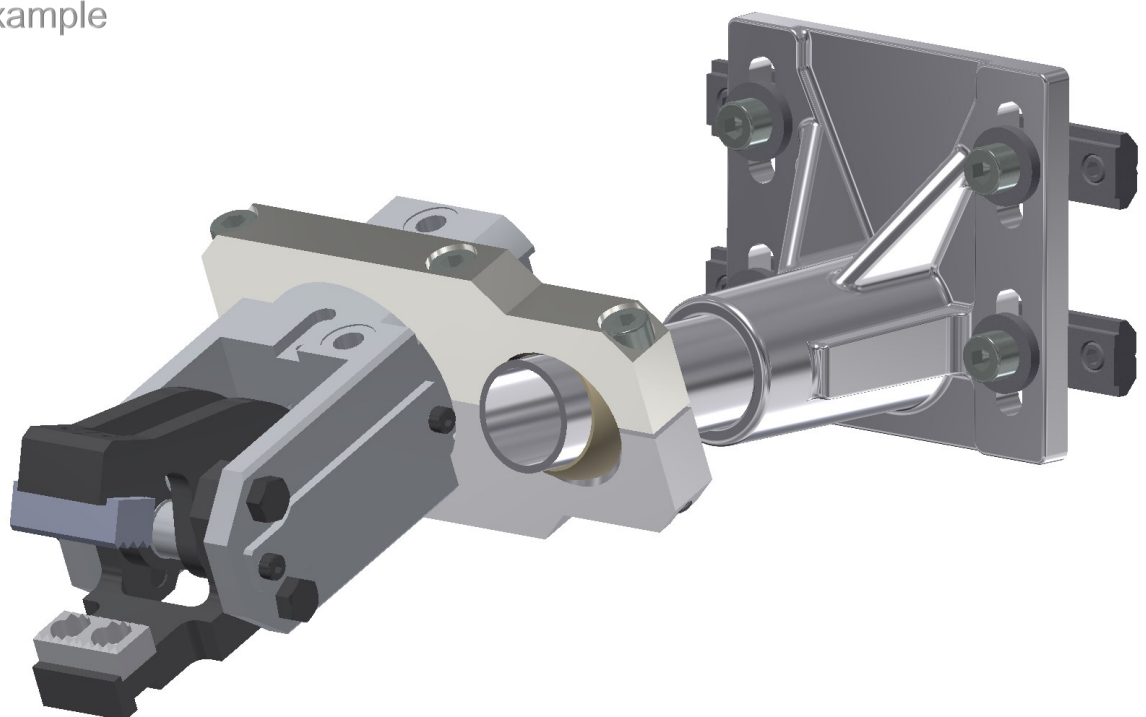
Connector DESTACO 84A3-3 Series



Artikelnummer/order number	Gewicht / Weight	Werkst. / Material	Oberfläche/Treatment
700022896	362 g	EN AW 7022	Eloxiert E6/EV1

Anwendungsbeispiel

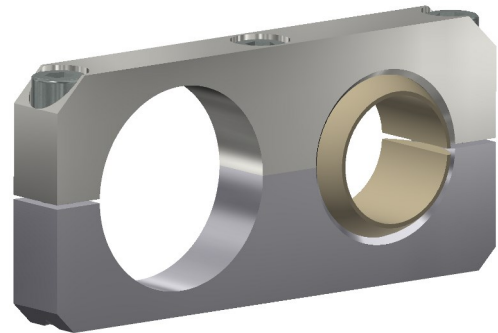
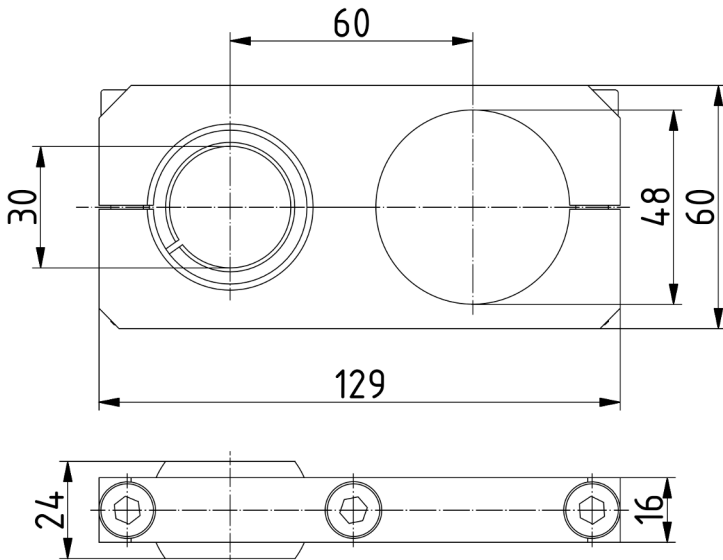
Application example



## Greifer System Komponenten / Modular Tooling System

### Adapter DESTACO 84A2-3 Serie

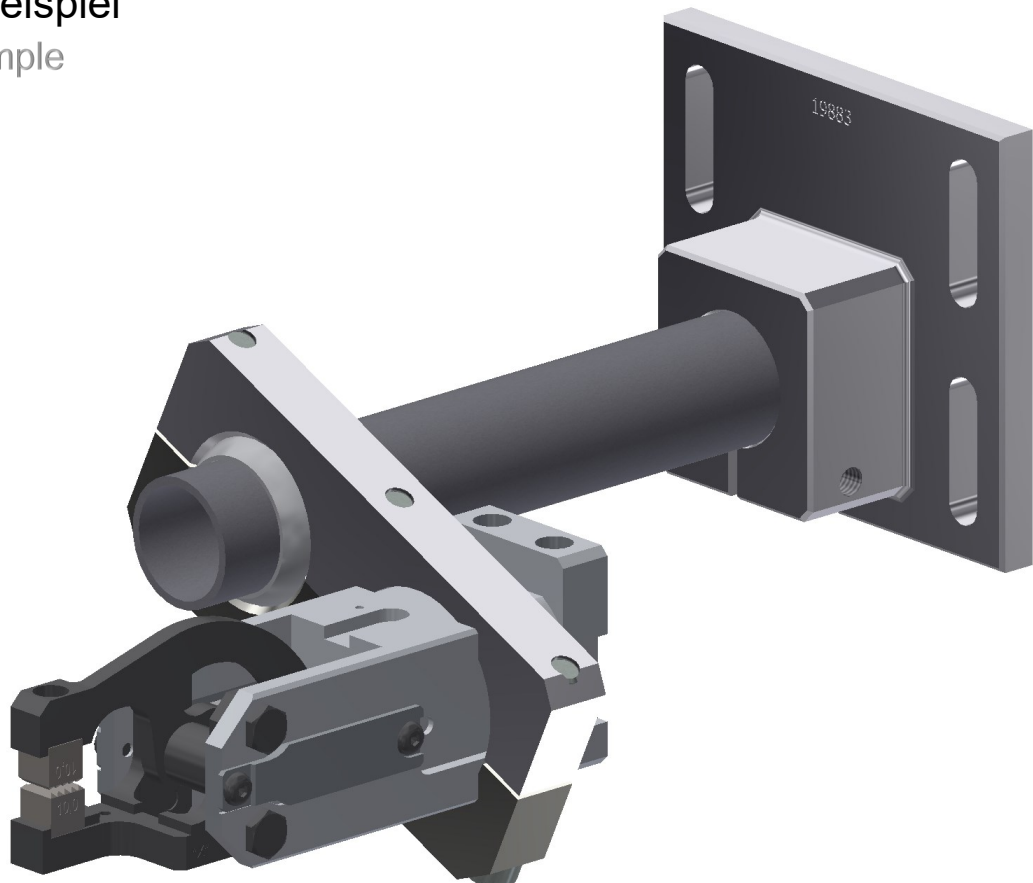
#### Connector DESTACO 84A2-3 Series



Artikelnummer/order number	Gewicht / Weight	Werkst. / Material	Oberfläche/Treatment
700023036	283 g	EN AW 7022	Eloxiert E6/EV1

### Anwendungsbeispiel

#### Application example

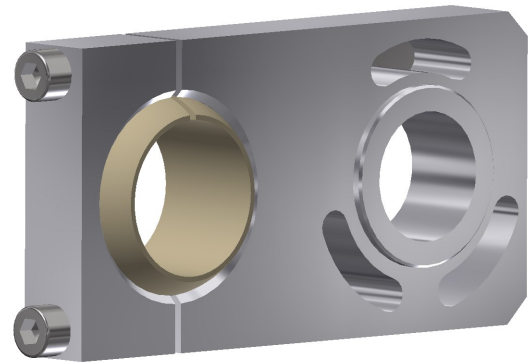


Greifer System Komponenten / Modular Tooling System

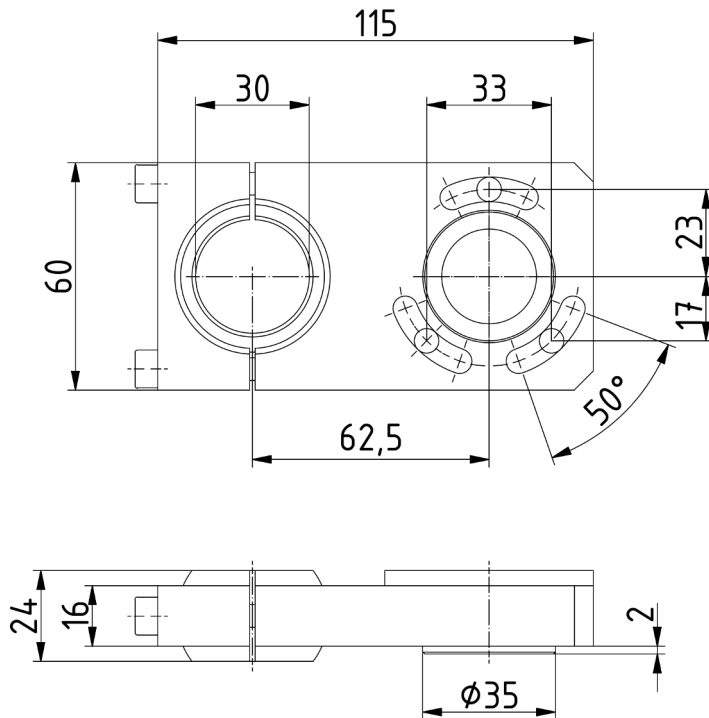
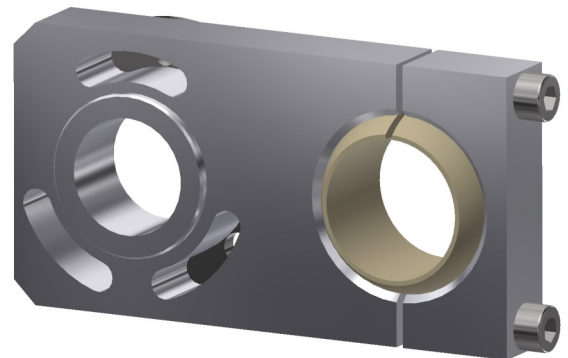
Adapter Springer MKS

Connector Springer MKS Series

700030431



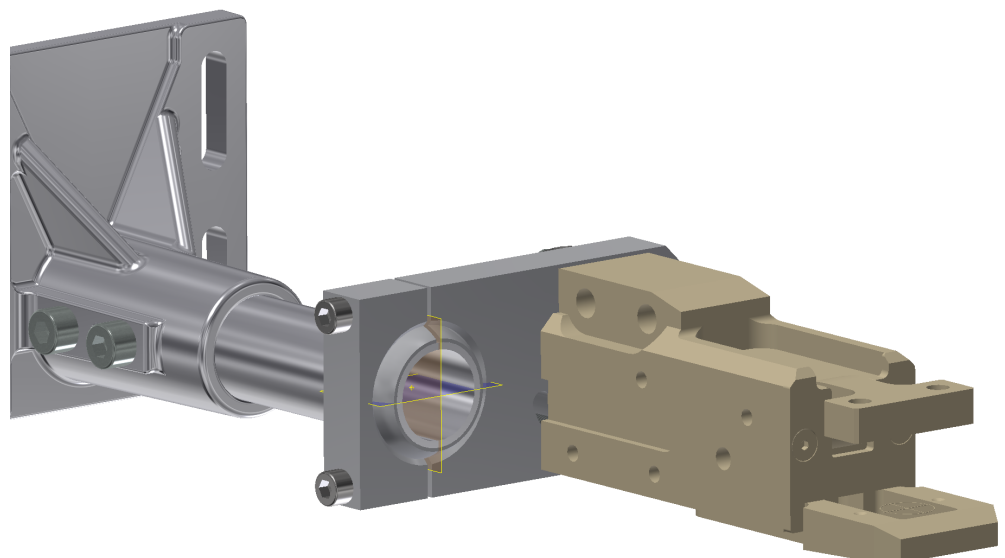
700031864



Artikelnummer/order number	Gewicht / Weight	Werkst. / Material	Oberfläche/Treatment
700030431	304 g	EN AW 7022	Eloxiert E6/EV1
700031864	304 g	EN AW 7022	Eloxiert E6/EV1

Anwendungsbeispiel

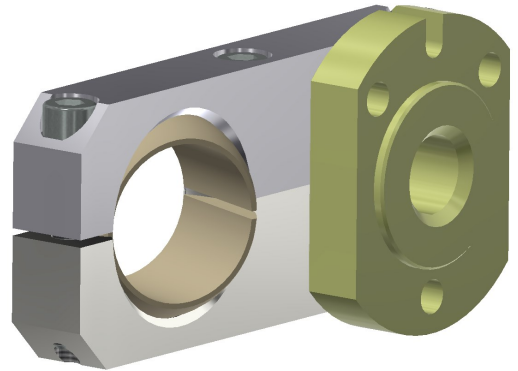
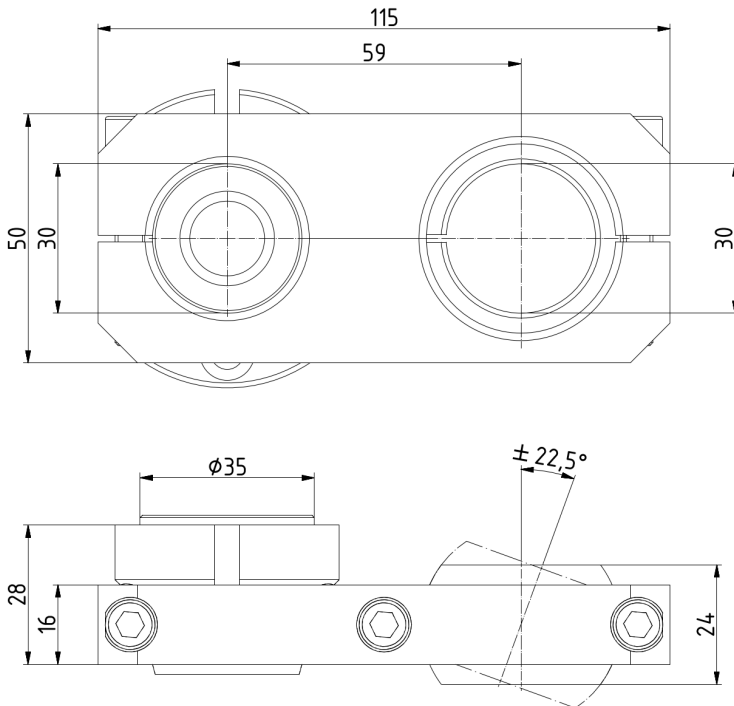
Application example



## Greifer System Komponenten / Modular Tooling System

### Adapter Springer MKS

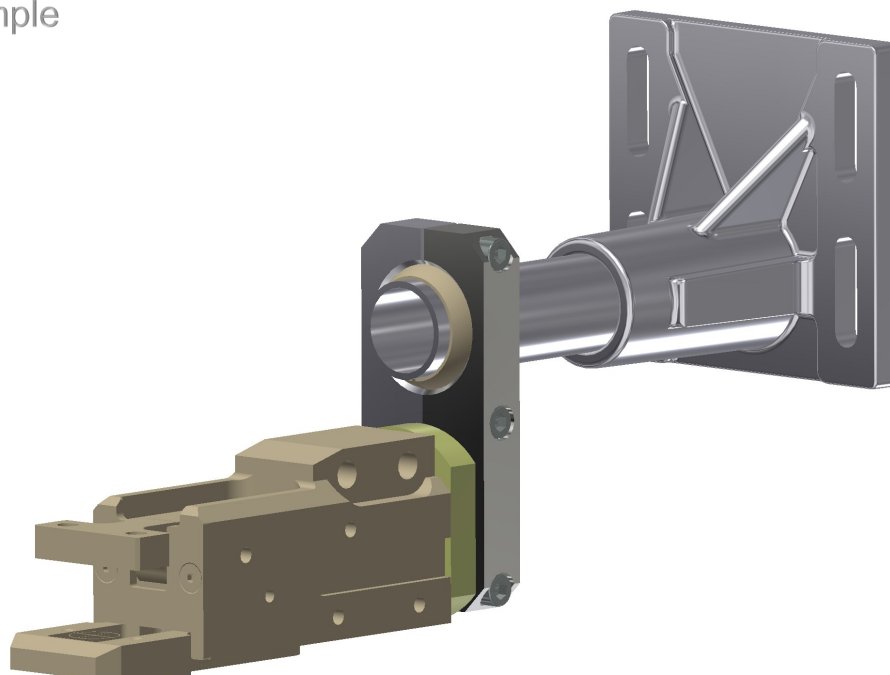
#### Connector Springer MKS Series



Artikelnummer/order number	Gewicht / Weight	Werkst. / Material	Oberfläche/Treatment
700030495	310 g	EN AW 7022	Eloxiert E6/EV1

### Anwendungsbeispiel

#### Application example

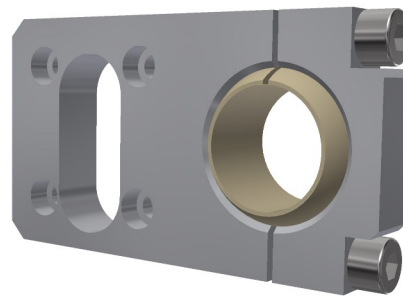
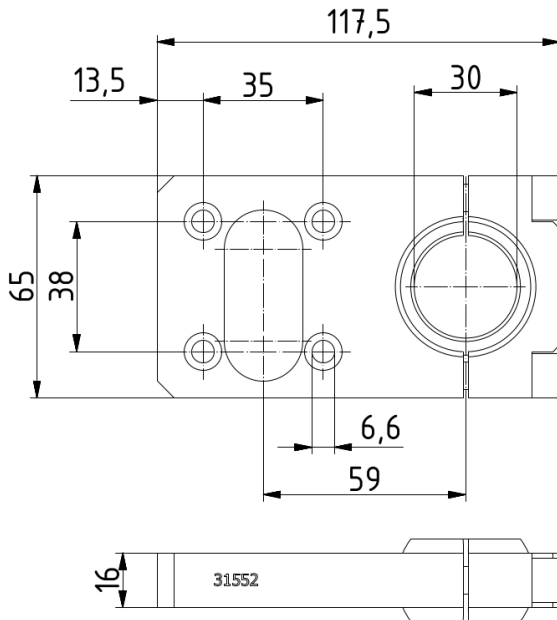




Greifer System Komponenten / Modular Tooling System

Adapter Springer MKS

Connector Springer MKS Series

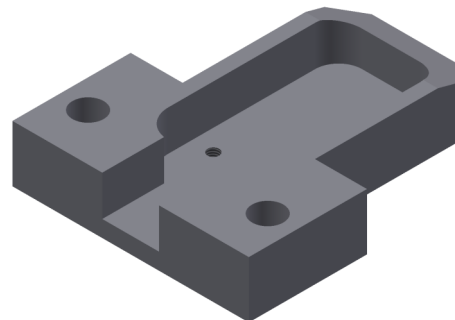
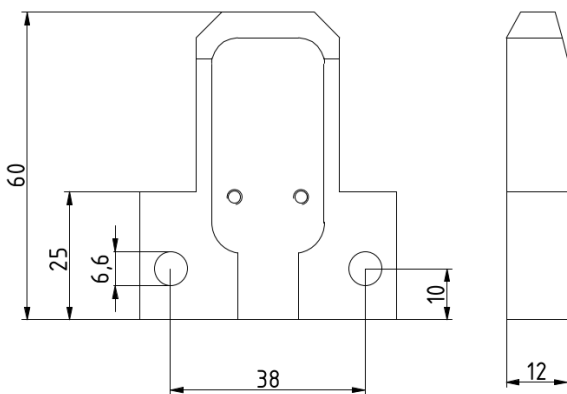
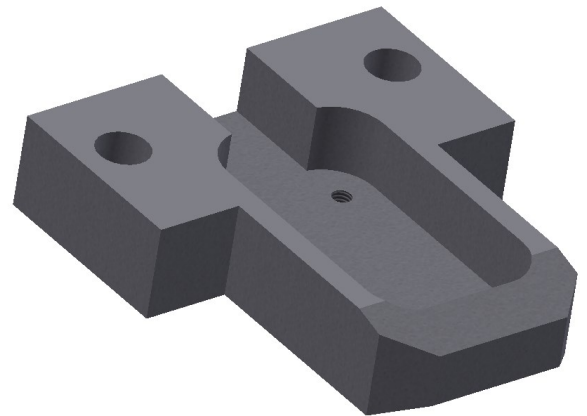
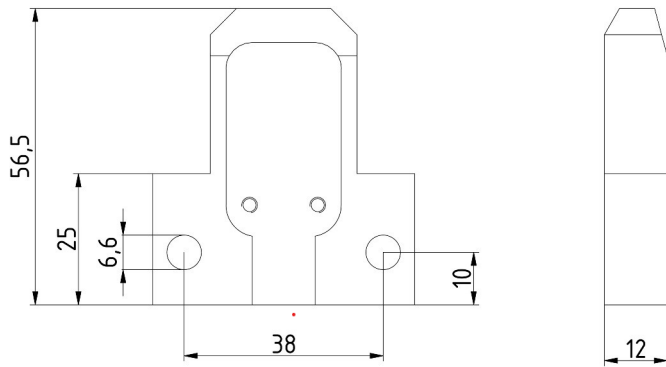


Artikelnummer/order number	Gewicht / Weight	Werkst. / Material	Oberfläche/Treatment
700031553	273 g	EN AW 7022	Eloxiert E6/EV1

## Greifer System Komponenten / Modular Tooling System

### Teilekontrolle

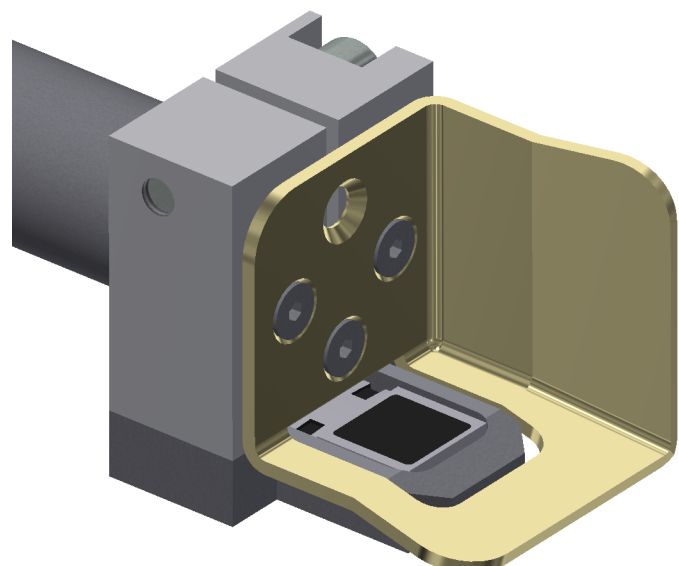
#### Parts control



Bezeichnung / Description	Artikelnummer/order number	Gewicht / Weight	Werkstoff / Material
Halter / Support	800019569	120 g	C45K
Inductive Sensor	BES01W4—BES R01ZC-PAC70B-BP03		

### Anwendungsbeispiel

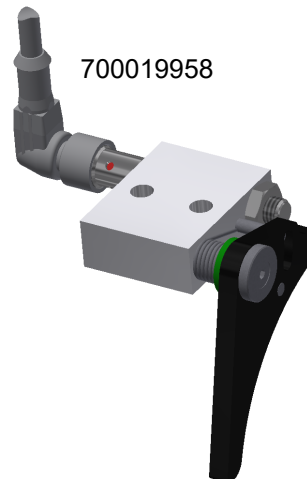
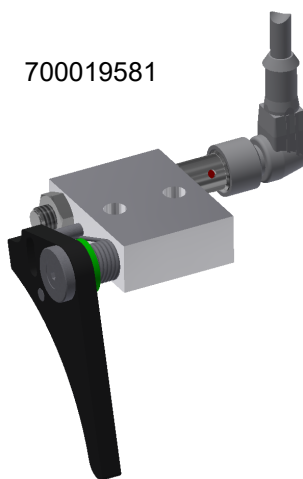
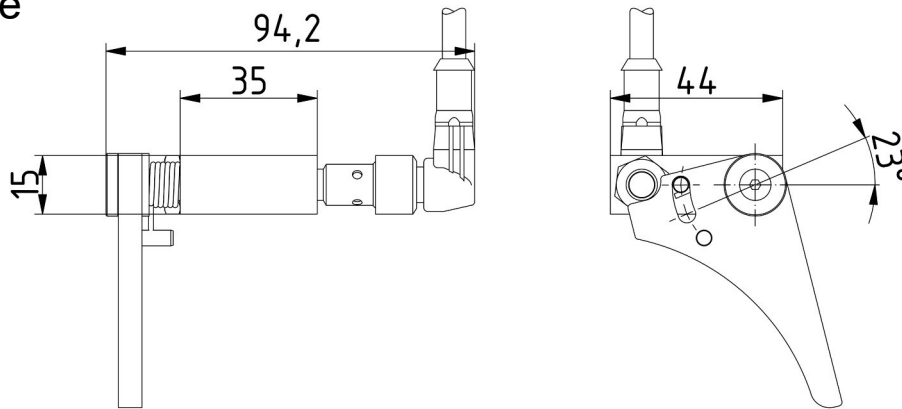
#### Application example



## Greifer System Komponenten / Modular Tooling System

### Teilekontrolle

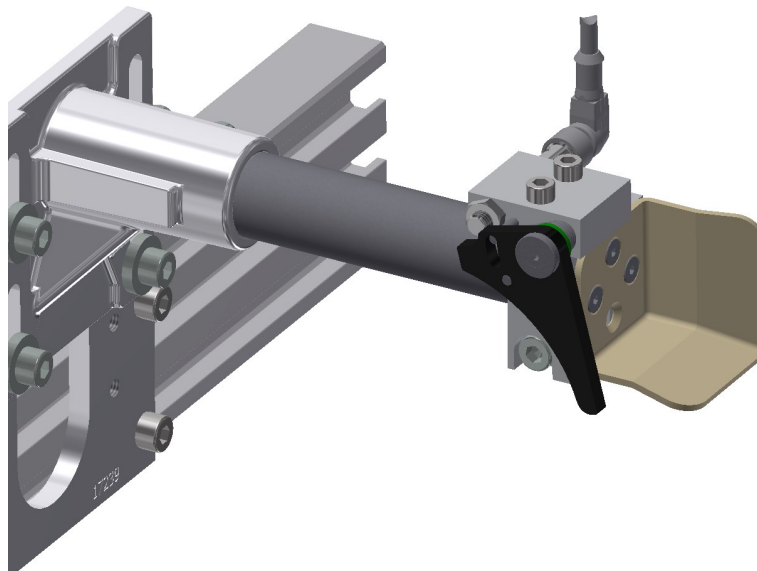
Parts control



Bezeichnung / Description	Artikelnummer/order number	Gewicht / Weight	Werkstoff / Material
Teilekontrolle	800019581	180 g	C45K / Alu
Teilekontrolle	800019958	180 g	C45K / Alu
Inductive Sensor	BES0027 - BES M08MH1-PSC15B-S04G		
Stecker M12x1	BBC0311 - M425-0000-1A-PX0334-020		

### Anwendungsbeispiel

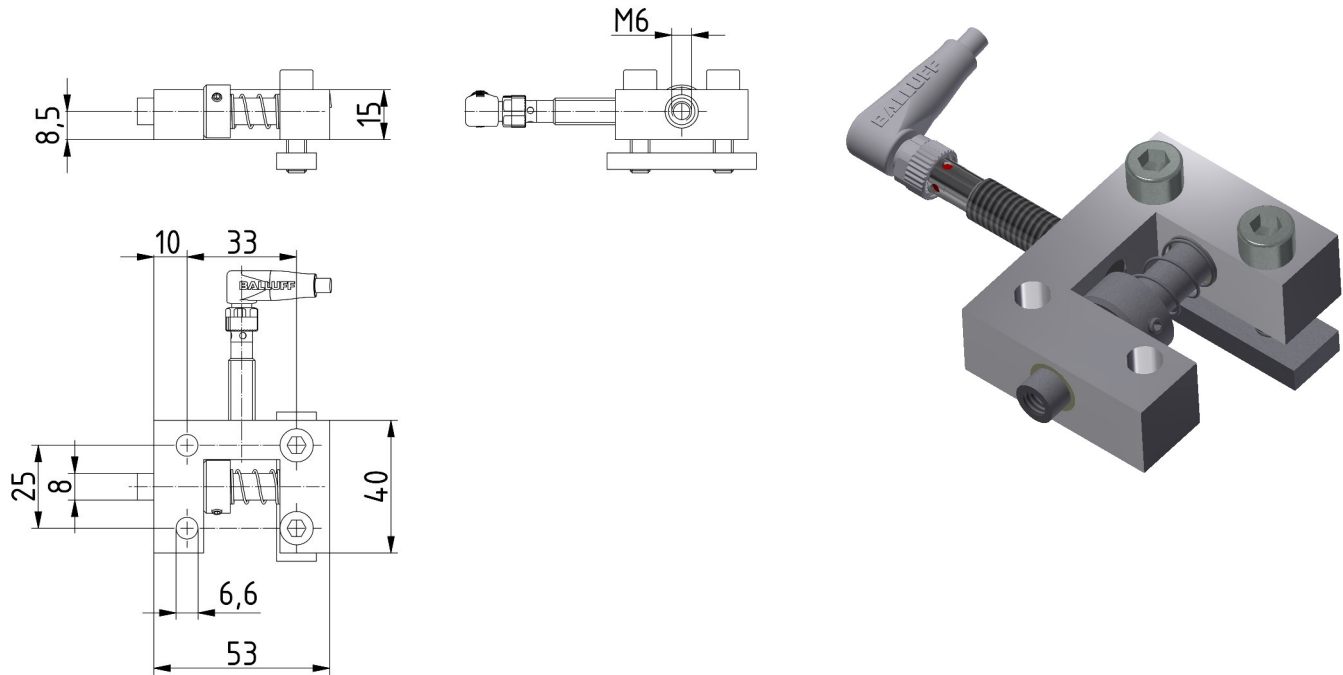
Application example



## Greifer System Komponenten / Modular Tooling System

### Teilekontrolle

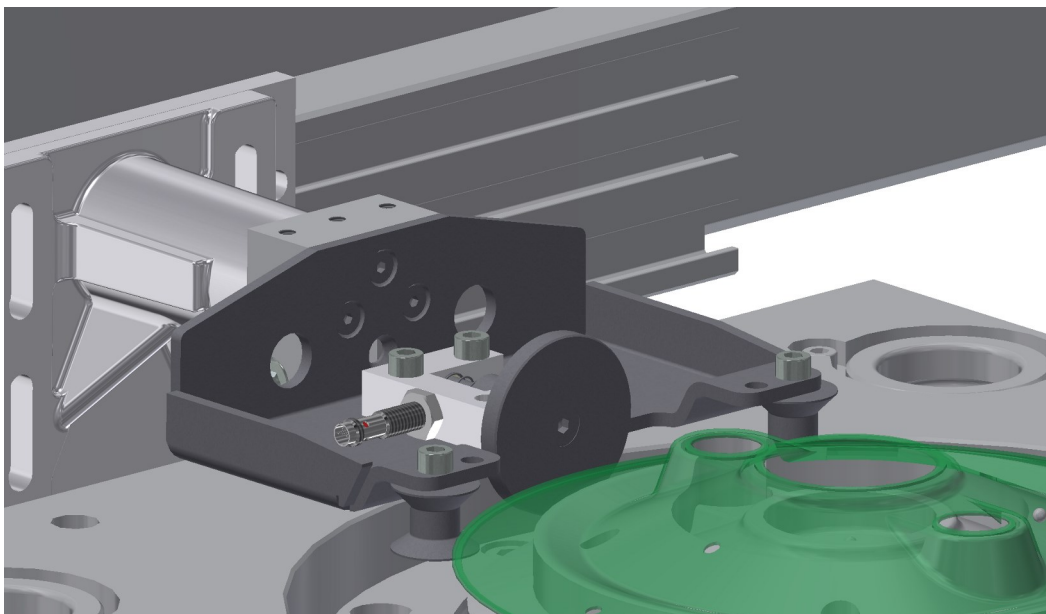
#### Parts control



Bezeichnung / Description	Artikelnummer/order number	Gewicht / Weight	Werkstoff / Material
Halter / Support	700021400	145 g	Alu/Stahl
Inductive Sensor	BES00P7—BES 516-324-G-E5-C-S49		

### Anwendungsbeispiel

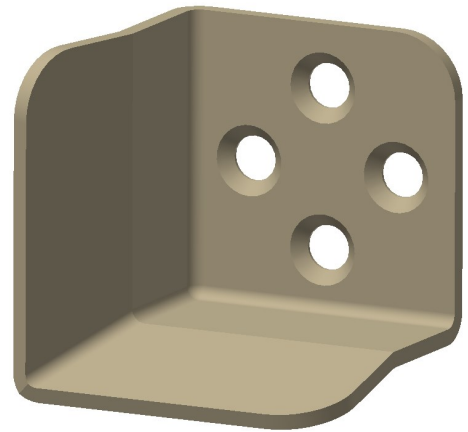
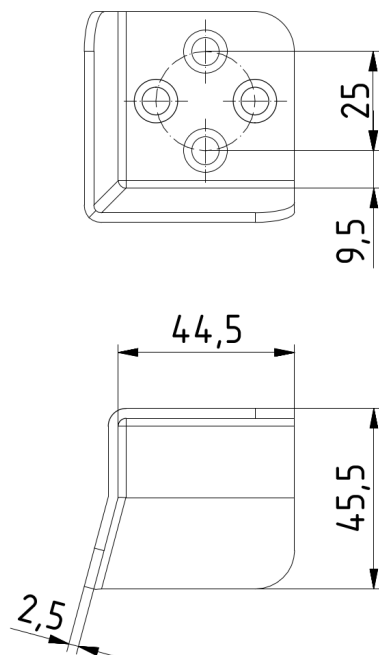
#### Application example



## Greifer System Komponenten / Modular Tooling System

### Normschaufel

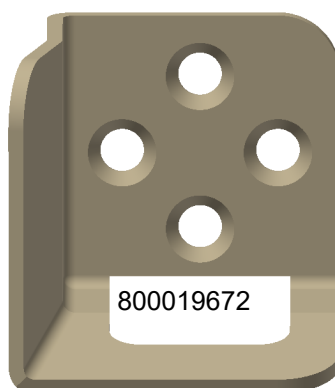
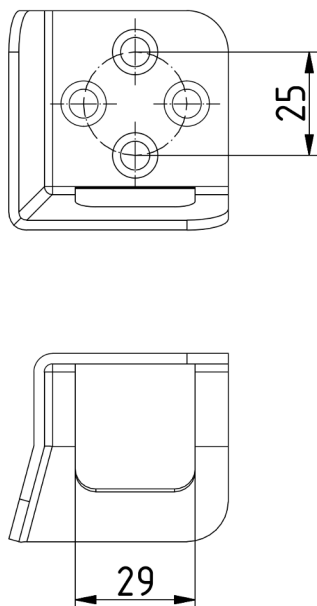
Basic shovel



Artikelnummer/order number	Gewicht / Weight	Werkstoff / Material
800019493	120 g	X5CrNi18-10

### Normschaufel mit Sensorausschnitt

Basic shovel with sensor slot

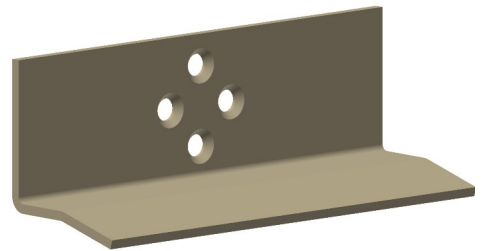
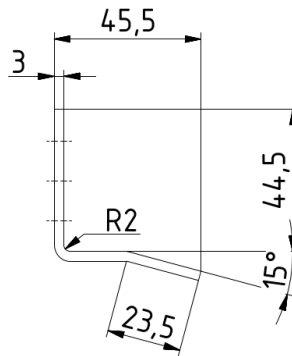
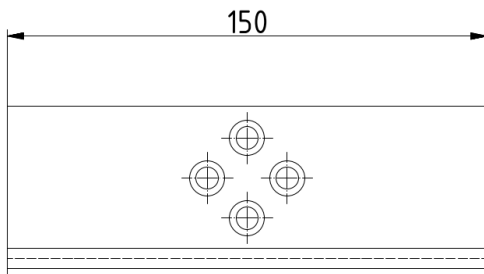


Artikelnummer/order number	Gewicht / Weight	Werkstoff / Material
800019672	100 g	X5CrNi18-10
800022491	100 g	X5CrNi18-10

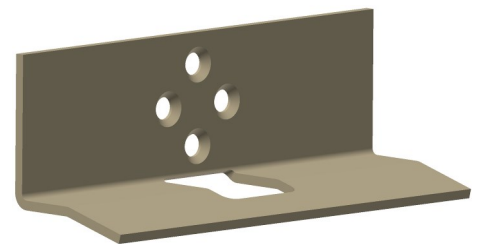
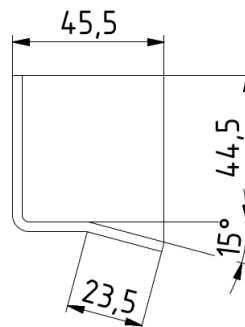
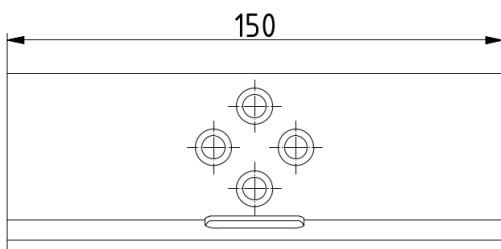
## Greifer System Komponenten / Modular Tooling System

### Normschaufel

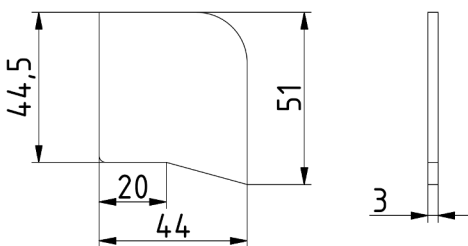
#### Basic shovel



Artikelnummer/order number	Gewicht / Weight	Werkstoff / Material
800019874	310 g	S235



Artikelnummer/order number	Gewicht / Weight	Werkstoff / Material
800019559	300 g	S235

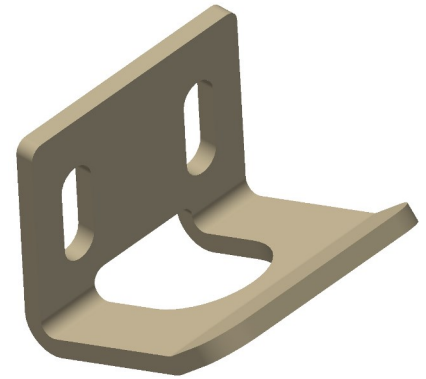
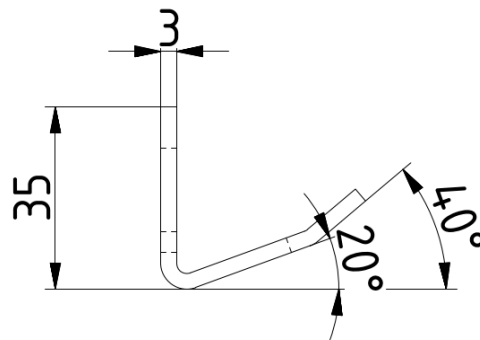
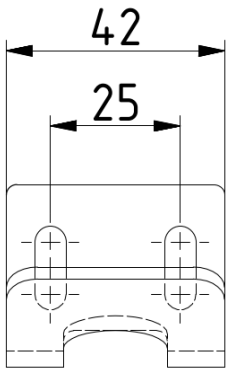


Artikelnummer/order number	Gewicht / Weight	Werkstoff / Material
800019798	50 g	S235

## Greifer System Komponenten / Modular Tooling System

### Niederhalter

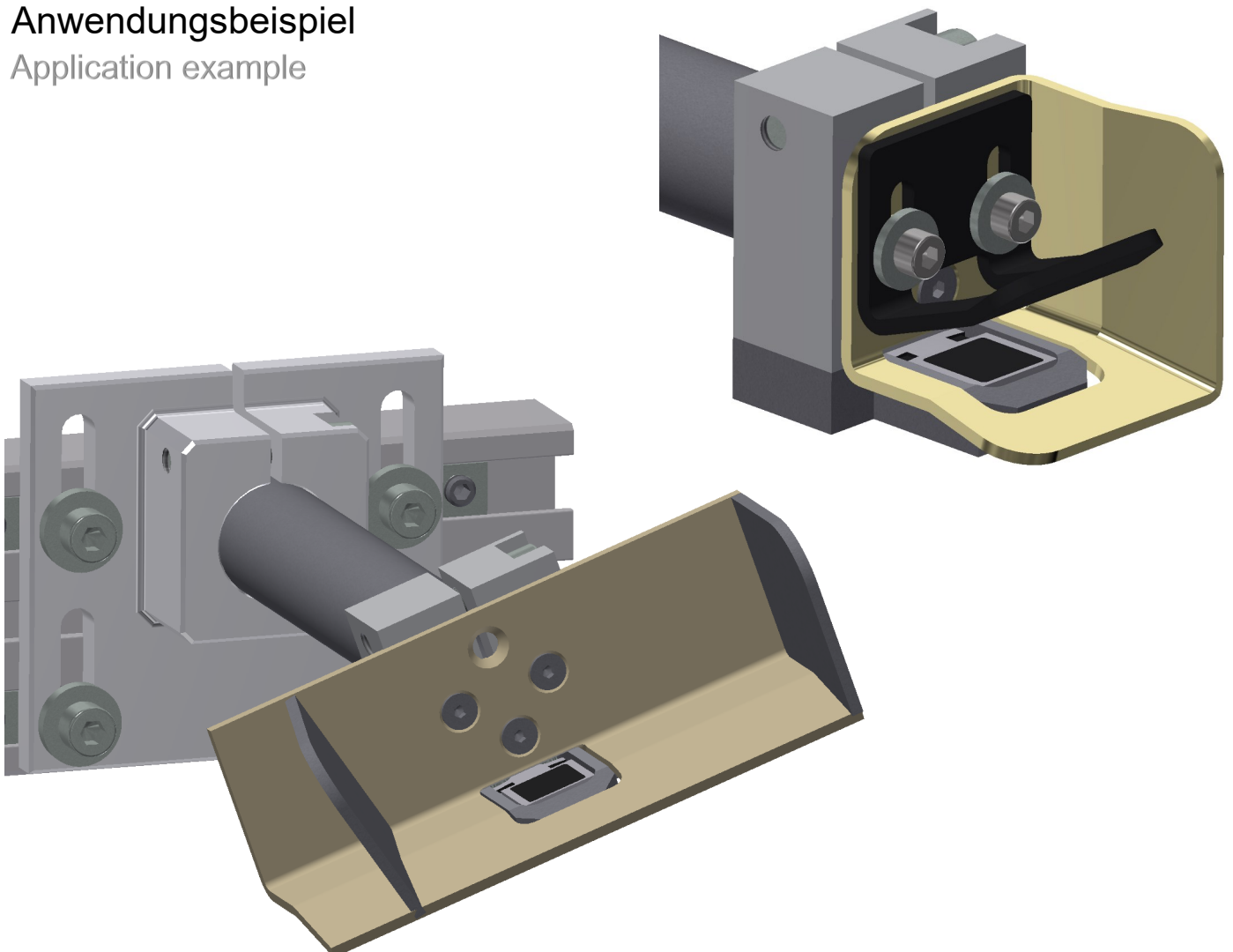
Basic Hold Down



Artikelnummer/order number	Gewicht / Weight	Werkstoff / Material
800019573	120 g	S235

### Anwendungsbeispiel

Application example



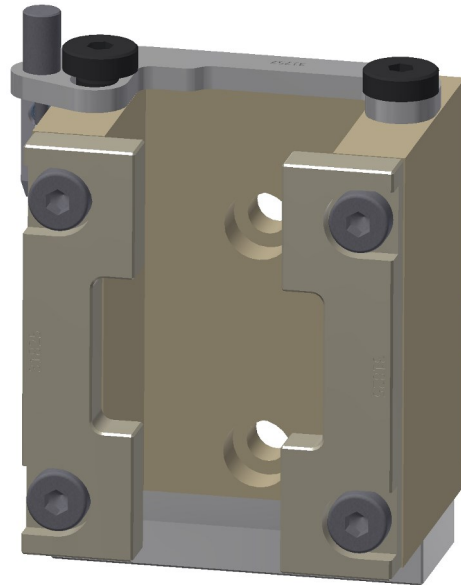
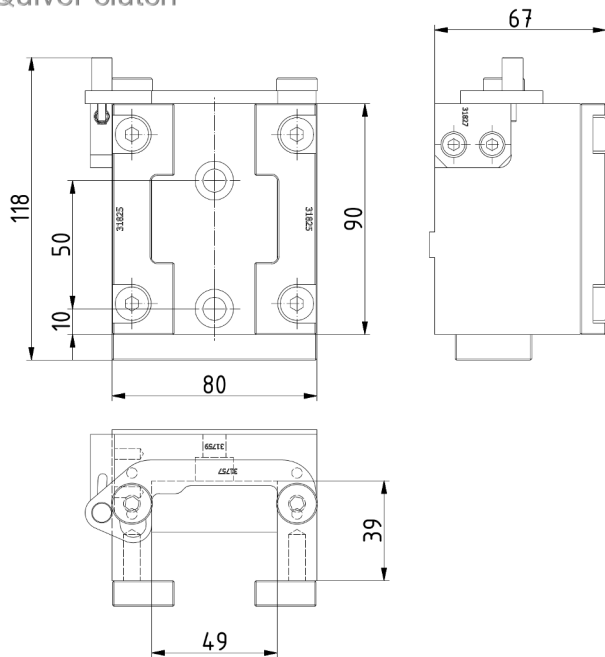
## Greifer System Komponenten / Modular Tooling System

### Zubehör

Accessories

### Köcherkupplung

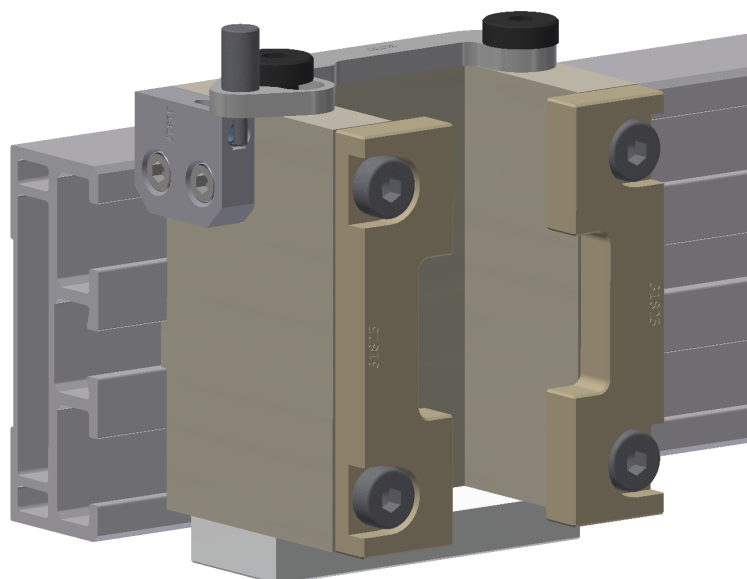
Quiver clutch



Artikelnummer/order number	Gewicht / Weight	Werkst. / Material	Oberfläche/Treatment
700031758	945 g	EN AW 7022	hartcoatiert

### Anwendungsbeispiel

Application example

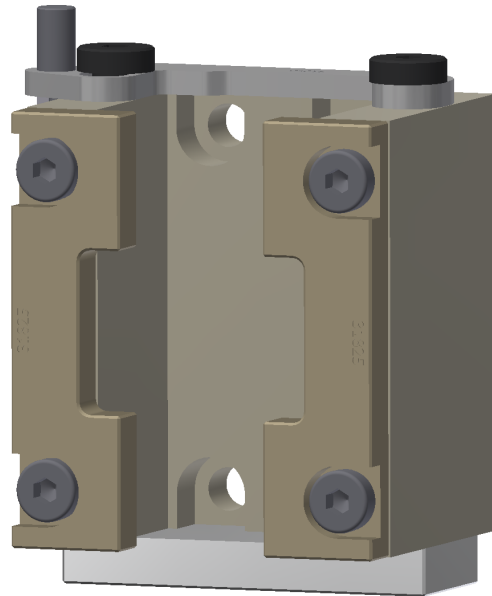
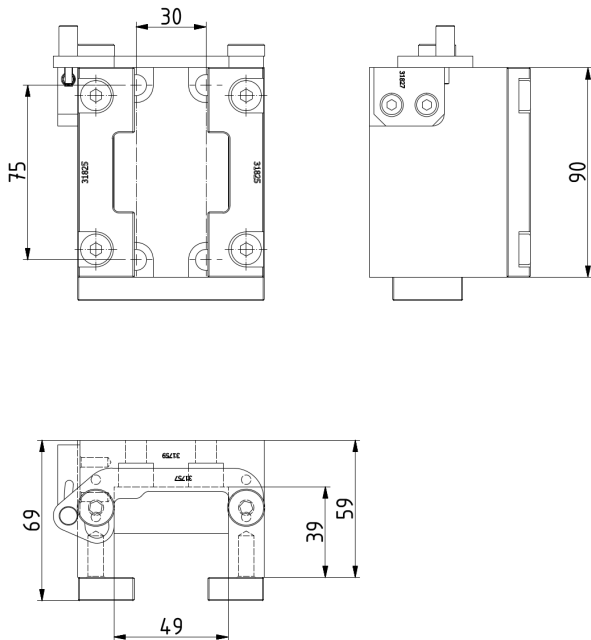




## Greifer System Komponenten / Modular Tooling System

### Köcherkupplung MKS-KOE01-AL

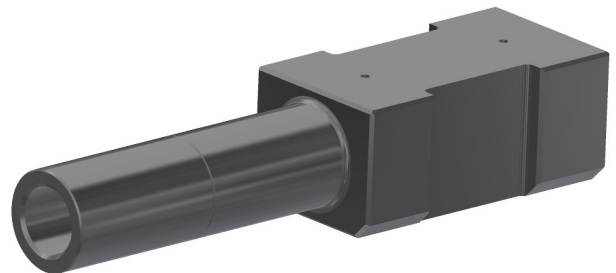
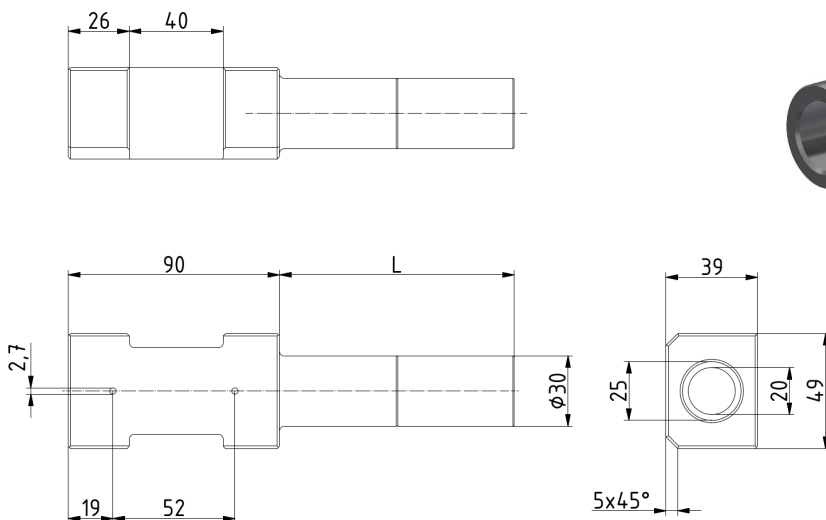
Quiver clutch MKS-KOE01-AL



Artikelnummer/order number	Gewicht / Weight	Werkst. / Material	Oberfläche/Treatment
700032600	965 g	EN AW 7022	hartcoatiert

### Köcher MKS30-AK102B-AL-XXX-HE

Quiver MKS30-AK102B-AL-XXX-HE

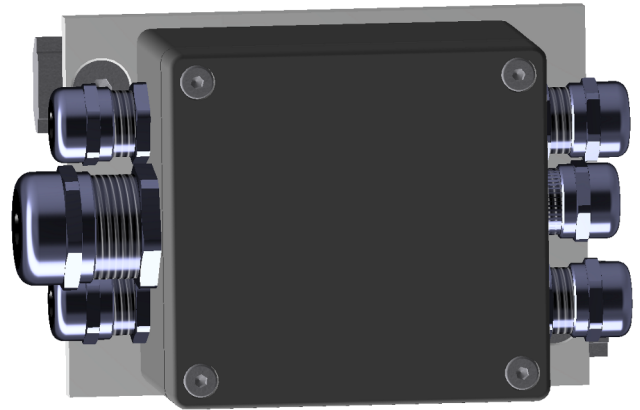
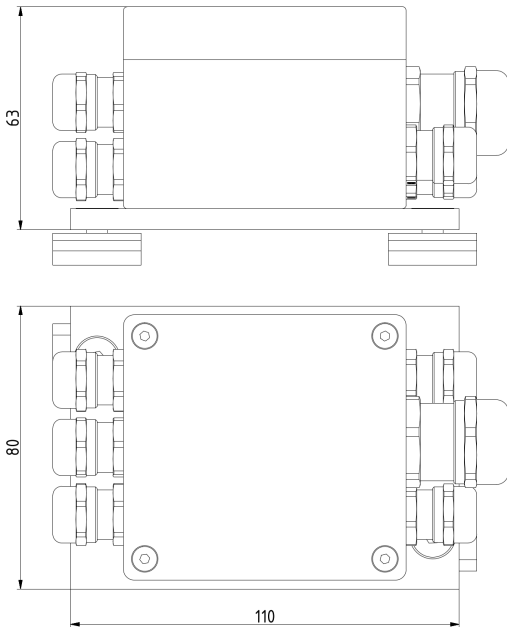


Maß L (mm)	Artikelnummer/order number	Gewicht / Weight	Werkstoff / Material	Oberfläche/Treatment
100	800032117	416 g	EN AW 7022	hartcoatiert
150	800032630	471 g	EN AW 7022	hartcoatiert

## Greifer System Komponenten / Modular Tooling System

### Klemmenkasten mit Grundplatte

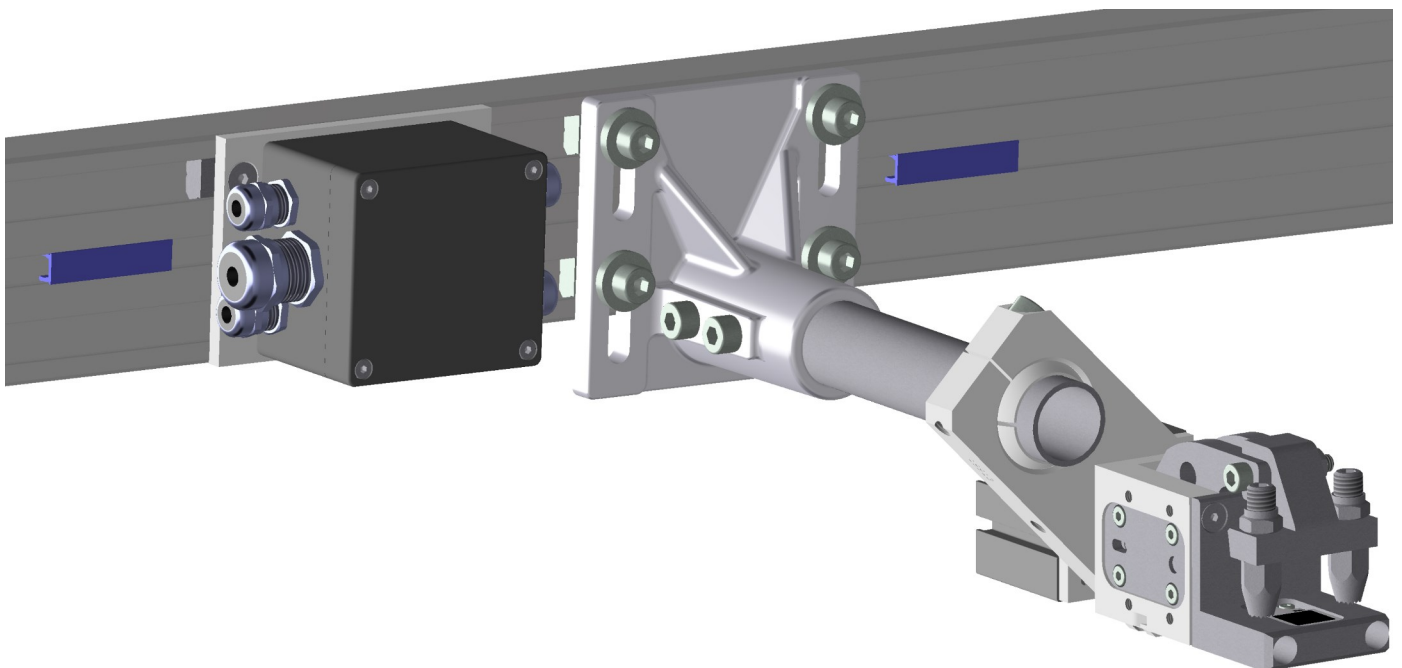
Junction box with basic plate



Artikelnummer/order number	Gewicht / Weight	Werkst. / Material
700020062	965 g	Materialmix

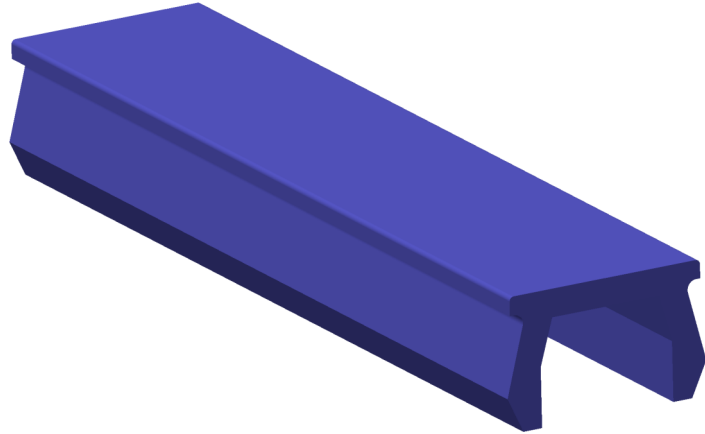
### Anwendungsbeispiel

Application example



**Greifer System Komponenten / Modular Tooling System****Verschlussprofil 10 mm Nut**

T-Slot profile 10 mm

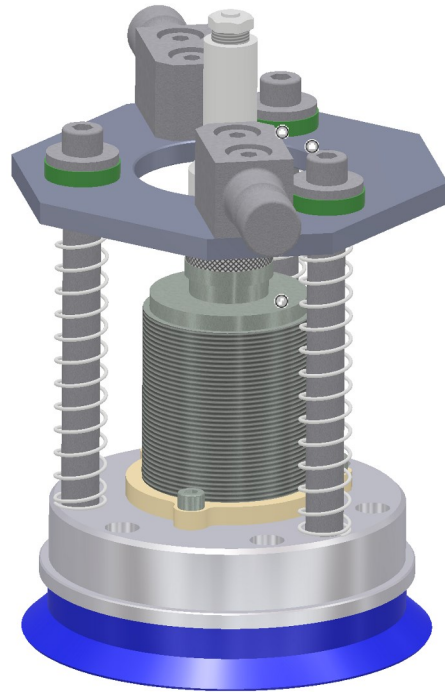
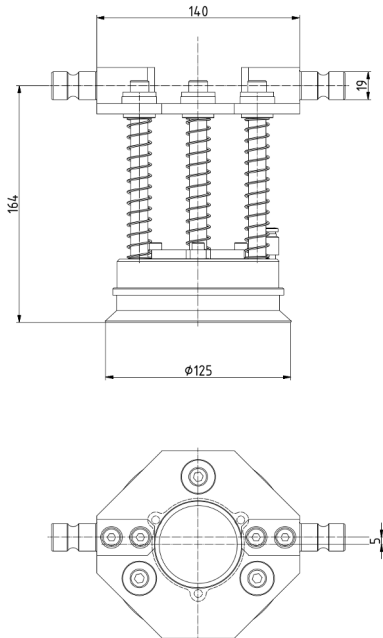


Artikelnummer/order number	Gewicht / Weight	Werkst. / Material	Lagerlänge (mm)
800002013	105 g	Kunststoff PVC-U (hart)	2000

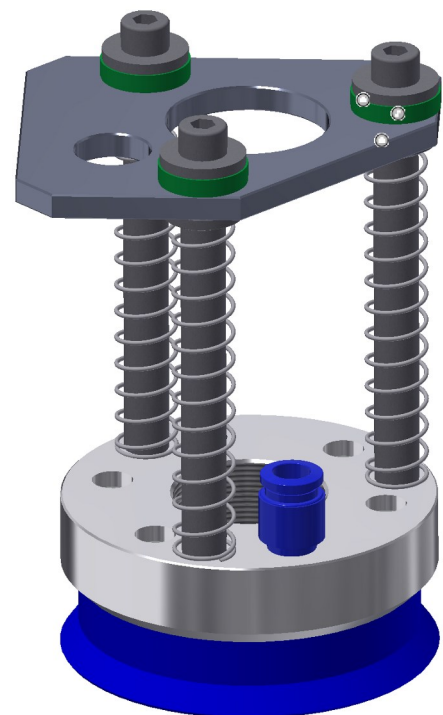
## Greifer System Komponenten / Modular Tooling System

### Doppelblechkontrolle / Sensorhalterung

Double blanc control / sensor support



Sensor	Artikelnummer/order number	Gewicht / Weight	Werkstoff / Material	Vacuum Sauger
M52x1	700029390	2,268 kg	Materialmix	Schmalz SR-DBD 130NBA-60

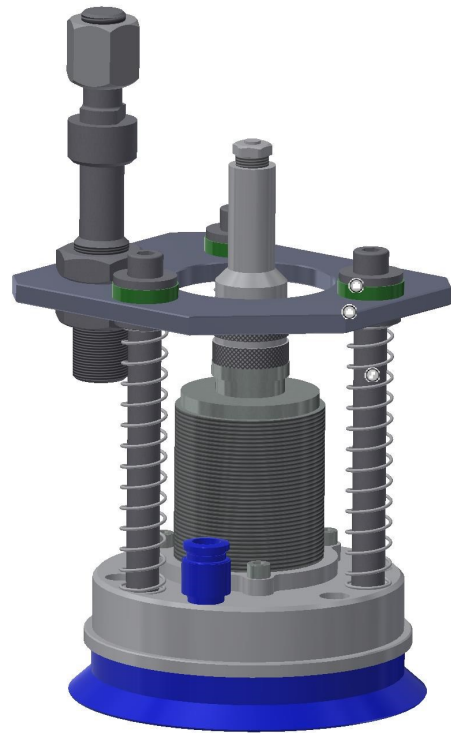


Sensor	Artikelnummer/order number	Gewicht / Weight	Werkstoff / Material	Vacuum Sauger
M42x1	700026715	2,268 kg	Materialmix	Schmalz SR-DBD 100NBA-60

## Greifer System Komponenten / Modular Tooling System

### Doppelblechkontrolle / Sensorhalterung

Double blanc control / sensor support



Sensor	Artikelnummer/order number	Gewicht / Weight	Werkstoff / Material	Vacuum Sauger
M55x1,5	700028675	2,268 kg	Materialmix	Schmalz SR-DBD 130NBA-60

## Greifer System Komponenten / Modular Tooling System

**Produktkatalog**  
**Greifer System Komponenten / Modular Tooling System**

**Ausgabe 10 / 2020**

**Durch den ständigen technischen  
Fortschritt sind Änderungen vorbehalten.  
Due to the constant technical improvement  
We reserve the right to make changes**

**Gillet GmbH**  
**In den Boeden 23**  
**D-71126 Gaeufelden**

**Amtsgericht Stuttgart**  
**HRB 245264**

**Geschäftsführer : Michael Gillet**

**Telefon : . . . . . 0049 (0)7032 95598-0**

**Fax : . . . . . 0049 (0)7032 95598-29**

**Internet : . . . . . [www.gillet-automation.de](http://www.gillet-automation.de)**

**Email : . . . . . [info@gillet-automation.de](mailto:info@gillet-automation.de)**